



WTS Research Guidebook
(Waimaw Chyum Jawng Sawk Sagawn Matsun Laika Buk)

Ka Hkyen Lajang Ai:
Sr. Mangshang Zung Bawm

Jep Shagrin Ai Ni (Editors):

WTS Faculty

Chief Editors:

Sr. Lamyaw Hawng Zawng

Rev. Marip Bawk San

Rev. Sumlut Brang Awng

September 2020

WTS Jawng Up A Aga Sumtu

Magam bungli langai ladat jaw jaw hte rawt jat galu kaba, byin tai awng dang lu na gaw dai magam bungli hte seng ai matsun madun ai lam grai ahkyak nga ai. Dai hte maren dai matsun madun lam gaw wuhpung wuhpawng langai hta shang lawm nga ai ni mahkra hpe rau sha myit mang hkrum let, hkrun lam langai hta hkawm sa shangun lu ai hte, rawt jat galai shai shangun lu nga ai.

2001 ning kaw na hpaw ning htan wa sai Waimaw Chyum Jawng gaw lai wa sai ten hta Sawk Sagawn Laika matsun ai lam hpe, n-gup aga laika mai sau pa hte sha galaw lu ai raitim, 2020-2021 Jawng lung shaning kaw na sawk sagawn laika matsun hpe laika buk hkrang hku ka lajang da lu sai. Dai majaw ndai sawk sagaw laika matsun laika buk gaw Waimaw Chyum Jawng a Sawk Sagawn Laika Matsun Laika Buk (WTS Research Guidebook) nan rai nga ai.

Ndai laika buk hpe ka lajang da lu sai majaw Karai Kasang a chyeju hpe shakawn ai zawn, laika buk byin tai hkra lit la hparan ya ai Srn. Gunhtang Nang Htang (Hpaji up), ahkying aten jaw atsam shaw let ka lajang ya ai Sr. Mangshang Zung Bawm(Sharin Sara), Jinghpaw laika lik hpe jep sharai ya ai Rev. Sumlut Brang Awng (Waingmaw Buga Hkalup Hpung) hte Rev. Marip Bawk San (Head of Kachin Studies Team, Kachinland College), hte ra ai lam ni hta hpaji jaw, jawm jahkum shatsup ya ai Waimaw Chyum Jawng sharin sara/sara num ni mahkra hpe Chyum Jawng a gawng malai na chying wa chyeju dum ai lam ka masat da ga ai. Yawng a ntsa Karai Kasang kaw na grau htum ai shaman chyeju tut nawng hkam la lu mu ga.

Waimaw Chyum Jawng Sawk Sagawn Laika Matsun Laika Buk gaw Waimaw Chyum Jawng hta Karai mungga sharin hkam la nga ai jawngma shayi/shadang sha ni hte magam gun sharin sara/sara num ni yawng hkrang langai hta hkan sa lu na matu yaw shada let ka lajang da sai majaw, ndai matsun laika buk hpe rau sha, jai lang akyu jashawn let Karai mungga sharin hkaja, sawk sagawn ai lam hta rawt jat galu kaba, chye chyang kung hpan sa wa ga ngu hpung dim ai rai.

Rev. Htawshe Dau Hkawng (Jawng Up)

Ka Hkyen Lajang Ai Wa A Numhtet Ga

WTS hta, ap nawng lai mat wa sai hkungga ai, magam gun manaw manang ni, shakut da ai hte, ya ten ta tut magam gun nga ai, manaw manang ni shang lawm ai majaw, ndai WTS a Sawk Sagawn Laika Matsun Laika Buk hpe ka shapraw dat lu ai gaw, Karai chyeju nan rai nga ai. Laika ngau kadun langai snr kumyai laika¹ (a Short Essay) hte sawk sagawn matsing sumhting laika² (a Research/Thesis writing) ni ka sa wa na shaloi, lam madun ai matsun laika buk langai tai na matu, yaw shada ai. Gara hku ka na ladat, (npawt hkridun kri malawm ni), ka hkrang (structure/format) hte hpaji jaw ga ni hpe, daw 10 garan let, tang madun da ai. Ta tut chye na lu na matu ga shadawn ni shalawm let mung, tang madun da ai. Dai majaw, kumyai snr laika ngau kadun, shatsam laika (term paper ka na jawng ma ni), sawk sagawn laika ka na jawng ma ni hte hpaji jaw sr/srn ni(supervisors) mung, ndai matsun laika buk hpe, npawt hkridun shatai let, ta tut akyu jashawn jai lang sa wa na matu, myit mada ai.

Jawm jep shagrin ya ai WTS magam gun, manaw manang ni, ndai guidebook byin tai wa lu na hkrun lam hta, hpaji jaw shang lawm ai WTS magma, gun lai wa sai, manaw manang ni hpe mung, Jinghpaw laika (lik tara) jep sharai shagrin ya ai Rev. Marip Bawk San hte Rev. Sumlut Brang Awng hpe mung, jawng a gawng malai na chying chyeju dum ga ai law. N dai laika buk gaw, hkum tsup ai lam n nga na re. Shawng lam hta Mungkan, Myen Mung hte chyum hpaji masa, hpaji masing hta hkan nna, ra wa ai hta hkan nna ka shading sharai jep shagrin jahkum shatsup na matu mung, myit mada ai.

Ladat jaw jaw hte, sawk sagawn chye ai amyu tai let galu kaba wa ga law.

Sr.Mangshang Zung Bawm(Sharin Sara)
Waimaw Chyum Jawng

¹ N dai laika buk hta e Ingalik hku a Short Essay ngu ai hpe “laika ngau gadun” ngu jai lang mat na re. Sara kaba Manam hpang gaw “Essay” ngu ai hpe “sumtang laika kadun ngu lang da ai. Shingdaw: Hpang Manam, *English-Kachin-Myanmar Pocket Dictionary* (Myint Press: Yangon, 2012), 382. Jinghpaw laika kung kyang ai ni nkau gaw Ingalik hku short essay hpe “kumyai” ngu nna shamyng ma ai.

² Ingalik hku “A Research Writing or Paper” hpe sawk sagawn laika ngu lang mat na re.

Malawm (Contents)

WTS Jawng Up A Aga Sumtu

Ka Hkyen Lajang Ai Wa A Numhtet Ga

Kadun Dawk Laika Hkum Ni Hpe Lachyum Shaleng Ai Lam (List of Abbreviations)

Daw Kaba 1: Sawk Sagawn Laika Ka ai Lam, snr Sawk Sagawn Laika Pa ai ngu ai hpa rai ta? What is a Research writing or paper?

Daw Kaba 2: Laika Ngau Kadun Langai Gara Hku Ka Na Ta? How to write a Short Essay?

Daw Kaba 3: WTS Sawk Sagawn Matsing Sumhting Laika Tang Shawn Hkrang (WTS Research Proposal)

Daw Kaba 4: Lik lagut a lam, Internet lik jai lang ai lam, Ga si raw raw lakap shaw la ai lam, Ga shingni gale ai lam hte mahta laika ka hkrang (Plagiarism, Use of Internet Sources, Quoting, Paraphrasing, Footnotes and Bibliography Referencing)

Daw Kaba 5: How to write a WTS Research Proposal in English?

Daw Kaba 6: Ntsa Lam Sawk Sagawn Laika Buk Hkrang Matsun (General Format Guidelines for Research and Paper Writing)

Daw Kaba 7: Laika Pa Ruhkum Masat Ai Lam Hte Lik Nhprang Masat Ai Lam (Page Limitation and A Standard Number of References or Sources)

Daw Kaba 8: Sawk Sagawn Laika Ka Hkrun Lam Hpe Hpaji Jaw Ai Lam (Research Supervision (for Supervisors))

Daw Kaba 9: Sawk Sagawn Laika Ka Hkrunlam hpe Bai Myitmang Dinglun Yu Ai Lam

Daw Kaba 10: Sawk Sagawn Laika Ka Lik Nhprang Ni

A Research Title Page Design for B.Th

Title page design for L.Th degree

Title Page Design for C.Th/B. Min

Designs for Exegetical, Practical and Systematic Papers developed by Kelvin Gary Smith (2008)

Kadun Dawk Laika Hkum Ni Hpe Lachyum Shaleng Ai Lam (List of Abbreviations)

Snr shing n rai

G.shd ga shadawn

LXX Septuagint (Ga Shaka Dingsa hpe Greek ga hku ka da ai Chyum Laika)

Pru Pru Mat Wa Ai Laika

Toefl Test of English as a Foreign Language

IELTS International English Language Testing System

N Footnote ((Laika pa lawu na lik ka hkrang)

SN Short Footnote form (hpang kalang bai lang ai shaloi, kadun dawka ka na rai jang)

WTS Waimaw Theological Seminary (Waimaw Chyum Jawng)

B Bibliography (Mahta laika jahpan ka hkrang)

s.v. under the title of

Standard of OT and NT Books Abbreviations

OT Books	NT Books
Gen Genesis	Matt=Matthew
Exod Exodus	Mark=Mark
Lev Leviticus	Luke=Luke
Num Numbers	John=John
Deut Deuteronomy	Acts=Acts
Josh Jushua	Rom=Romans
Judg Judges	1-2 Cor=1 -2 Corinthians
Ruth Ruth	Gal=Galatians
1-2 Sam 1-2 Samuel	Eph=Ephesians
1-2 Kgs 1-2 Kings	Phil=Philippians
1-2 Chr 1 -2 Chronicles	Col=Colossians
Ezra Ezra	1-2 Thess=1-2 Thessalonians
Neh Nehemiah	1-2 Tim=1-2 Timothy
Esth Esther	Titus=Titus
Job Job	Phlm=Philemon
Ps/Pss Psalms	Heb=Hebrews
Prov Proverbs	Jas=James
Eccl Ecclesiastes	1-2 Pet=1-2 Peter
Song of Songs of Solomon	1-2 - 3 John=1-2- 3 John
Isa Isaiah	Jude=Jude
Jer Jeremiah	Rev=Revelation
Lam Lamentations	
Ezek Ezekiel	
Dan Daniel	
Hos Hosea	

Joel Joel	
Obad Obadiah	
Jonah Jonah	
Mic Micah	
Nah Nahum	
Hab Habakkuk	
Zeph Zephaniah	
Hag Haggai	
Zech Zechariah	
Mal Malachi	

Ga Shaka Dingsa Chyum Laika Mying Ni (Jinghpaw hku)

1. Ningpawt Ninghpang Laika- NN	21. Hpaji Ningli Laika - Hpj
2. Prumat Wa Ai Laika- Pru	22. Shawlumon A Mahkawn Ga - Shlm
3. Jaw Jau Laika - JJ	23. Esaia Laika - Esa
4. Bu Hkawm Laika -Bhk	24. Yerehia Laika - Yer
5. Tara Jahprang Laika- Trj	25. Sharung Shayawt Laika- Shy
6. Yawshu Laika - Ysh	26. Ezekela Laika - Ezek
7. Tara Agyi Laika - Trg	27. Daniela Laika - Dan
8. Ruhta Laika - Rht	28. Hosea Laika - Hos
9. 1 Samuela Laika - 1 Sam	29. Yoela Laika - Yoe
10. 2 Samuela Laika - 2 Sam	30. Amo Laika - Amo
11. 1 Hkawhkam Laika- 1 Hk	31. Obedia Laika - Obe
12. 2 Hkawhkam Laika - 2 Hk	32. Yona Laika - Yon
13. 1 Hkawhkam Labau Laika -1 Hkl	33. Mihka Laika - Mhk
14. 2 Hkawhkam Labau Laika -2 Hkl	34. Nahum Laika- Nah
15. Ezra Laika - Ezh	35. Habakuk Laika - Hbk
16. Nehemia Laika - Neh	36. Zehpania Laika - Zhp
17. Eshta Laika - Esht	37. Hagi Laika - Hag
18. Yoba Laika - Yob	38. Zehkaria Laika - Zhk
19. Shakawn Kungdawn -Shk	39. Malahki Laika - Mal
20. Ga Shagawp Laika - Gsh	

Ga Shaka Ningnan Chyum Laika Mying Ni

1. Mahte Laika - Mht	15. 1 Timohti Laika - 1 Tim
2. Marku Laika- Mrk	16. 2 Timohti Laika - 2 Tim
3. Luka Laika - Luk	17. Titu Laika - Tit
4. Yawhan - Yhn	18. Hpilemon Laika - Hpm
5. Kasa Laika - Ksa	19. Hebre Laika - Heb

6. Roma Ni Kaw Shagun Dat ai Laika - Rom	20. Yaku Laika - Yak
7. 1 Korinhtu Laika - 1 Kor	21. 1 Petru Laika - 1 Pet
8. 2 Korinhtu Laika - 2 Kor	22. 2 Petru Laika - 2 Pet
9. Galati Laika - Gal	23. 1 Yawhan Laika - 1 Yhn
10. Ehpesu Laika- Ehp	24. 2 Yawhan Laika - 2 Yhn
11. Hpilipi Laika - Hpp	25. 3 Yawhan Laika - 3 Yhn
12. Kolose Laika - Kol	26. Yuda Laika - Yud
13. 1 Htesaloni Laika - 1 Hte	27. Shingran Laika - Shr
14. 2 Htesaloni Laika - 2 Hte	

Daw Kaba 1: Sawk Sagawn Laika Ka Ai Lam/ Sawk Sagawn Laika Pa Ngu Ai Hpa Rai Ta? What is a Research Writing or Paper?

Sawk sagawn ai (research) ngu ai ga si gaw, tsaban 16 hpang daw na Pyintit ga *recerche*³ ngu ai kaw na, yu hkrat wa nna, lachyum gaw, lama ma a lam hpe, ningmu nnan snr shiga chye lu na matu, atsawm sha sadi sahka tam sawk sagawn ai, rudi gawn ai ngu ai rai nga ai. Hpungtang hpaji ladat, hkrak hkrak sawk sagawn ai lam ngu ai gaw (a scientific research), “Manghkang ni a lawnglam npawt [source, cause, reason] mabyin ni hpe, lai ladat hkrak hte hkaja la, san jep sagawn, sawk sagawn rai nna, sawk mu ai lam ni hpe, sawn bawng ai lam galaw nhtawm, teng mabyin ni hpe, ngang ngang kang kang, madi madun tang madun lu ai hpungtang hpaji langai re.”⁴

1.1 Hpa majaw sawk sagawn ai lam galaw ra nta? Why do we need to research?

Ga shadawn, hpaji janmau lu na matu sawk sagawn ra ai kun? Manghkang snr chye mayu ai hpe, ladat jaw jaw sawk na matu kun? Manghkang hparan na matu kun? N nga shi ai hpe sawk shapraw na, n sanglang ai hpe sawk sanglang na matu, mahtai tam sawk na matu, rudi gawn na matu kun? ngu ai ga san ni lawm nga ai.

1.2 Sawk Sagawn Ai Akyu(The Benefits of Research)⁵

Machye machyang ni mahkra gaw, sawk sagawn (research) ai kaw nna, hkam la lu ai akyu ni rai nga ai. Awng dang taw ai bungli ni mahkra mung, sawk sagawn (research) ai kaw na mahtai kaja rai nga ai. Ntsa lam tak sawn yu let, mahtai shapraw ai kaw nna, hkrak tup teng sha jaw ai mahtai, lu la na matu sawk sagawn (research) chye galaw ai amyutai ra saga ai. Sawk sagawn (Research) ai gaw, sharin la ai lam (learning) hte garan gachyan ai lam (sharing) mung rai nga ai. "Hpaji byeng-ya mu hkrup ai hte chye chyang ai myit lu la ai gaw, a nga ai."(*Ga Shagawp Laika 3:13*).

Matut nna, hpang na daw hta kumyai langai snr laika ngau kadun langai (a Short Essay) hpe gara hku, ka ra ai lam hpe, bawngban mat wa na ga ai.

³ “Research,” Oxford Learner’s Dictionaries, https://www.oxfordlearnersdictionaries.com/definition/english/research_1 (Accessed 12 October 2020)

⁴ “Jet Ai Sim Lam Masa,” *The Kachin Time Review: Bi-monthly Jinghpaw Research Journal* 1, no. 2(n.d), front cover page.

⁵ Lum Ze Lafa (Hpaji Up Usa), “Sawk Sagawn Ai Akyu,” interview by Zung Bawm Mangshang, Messenger, June 9, 2020.

Daw Kaba 2: Laika Ngau Kadun Langai Gara Hku Ka Na Ta?

How to write a Short Essay?

Ndai daw kaba hta, laika ngau kadun (a short essay) hpe, gara hku ka ging ai ngu ai ladat, hkrang hte hpaji jaw ga hte, laika ngau kadun amat jaw hkrang ni hpe, htawng madun mat wa na re.⁶ Ntsa lam laika ngau ka hpan madung 5 nga ai lam chye lu ai: maumwi mausa hte seng ai laika ngau (a narrative essay), gawn dan hkrang shaleng dan ai hte seng ai laika ngau (a descriptive essay), shingdaw dan ai hte seng ai shingdaw ai laika ngau (a comparative essay), shalau la ai hte seng ai laika ngau (a persuasive essay), tsun dangrang dara ai hte seng ai laika ngau (an argumentative essay) ni rai ma ai. Dai hpan manga kaw na, laika ngau ka hpan lahkawng: myit kap hkra ka shalen (lau) la ai hte seng ai laika kadun langai (a persuasive essay) hte tsun dara ai hte seng ai laika ngau gadun langai (an argumentative essay) hpe ga shadawn jaw let, tang madun mat wa na re. Ndai laika ngau kadun 2 gaw tsang gawk kata hta ka ra wa ai ten hta, ta tut akyu jashawn kasi yu la mai na myit mada ai.

Laika ngau kadun shagu hta:

Ga hpaw (introduction),⁷ ga hkum(body) hte ga dim (Conclusion) ngu nna, daw masum di ka mai ai:

<p>Ga Hpaw(Introduction) Ga hpaw (introduction) hta mung daw masum di mai ka shagawp nga ai.</p> <ol style="list-style-type: none">1) ga baw a ga si ni hpe, ga shingni gale⁸ let ka shatsawm ai lam+ga baw hte mahkri shawn ai ningmu nkau ni hte ka shatsawm ai (restate the topic by paraphrasing+add some topic relevant ideas)2) ga baw hte seng nna, tinang a ningmu ni ka shalawm ai(your own opinion on the topic)3) tinang a ga baw snr ningmu hpe	<p>Lahta na ladat (strategy) hpe lang let, shalen (lau) la ai hte seng ai laika ngau gadun langai (a persuasive essay) a ga hpaw hpe g,shd., hku ka yu ai shaloi</p> <p>“Waimaw Chyum Jawng A Dawn Jan Ai Ningja Nkau Mi”</p> <p>Ga Hpaw Myen Mungdan hta, chyum jawng ni law law nga sai hpe chye lu ai. Jawng shagu hta mai kaja lam ni nga ai zawn, maga mi hta gawng kya</p>
---	--

⁶ Ndai laika ngau a ladat, hpaji jaw ga hte ningmu nkau mi hpe IELTS hte TOEFL ni a sumtang laika ka hkrang hte mahkri shawn ai hku nna sawk ka shachyaw da ga ai.

⁷ Ga npawt.

⁸Ga shingni gale ai hpe Ingalik hku “paraphrase” ngu lang da ai. Ga shingni gale ai ngu ai gaw: ga baw a ga si ni hpe adingtaw n lang ai sha lachyum, ningmu n shai ai sha dai hte lachyum bung ai ga si(synonymns) ni hte ka shaleng shagawp ai lam rai nga ai.

<p>madi shadaw ya ai ningmu madung (ideas) 2 snr 3 daram hte shaleng ai laika ngau a akri (Thesis Statement with 2 or 3 main ideas to support your topic or opinion+ to keep you focus on the main ideas)</p> <p>Laika ngau a akri⁹ (Thesis Statement) ngu ai hpa rai ta?</p> <p>Laika ngau a akri ngu ai gaw, tinang a laika ngau hpe gara hku zinlum hkyen lajang shinggyin (orgnize) sa wa na, mawn shatsawm shalat shapraw lajang (how the research will be designed or organized) sa wa na ngu ai hpe gadun dawh hte tang madun ai lam rai nga ai.</p>	<p>lam ni mung law law nga nga ai. Dai hte maren, anhte Waimaw Chyum Jawng hta mung, mai kaja ai lam ni law law nga ai zawn, gawng kya lam ni mung nga na re. (<i>ga baw hte seng ai ga yan hpe ga shingni gale let ka shatsawm ai+tinang a ningmu ni hpe mai ka shalawm ai</i>). Rai tim, ngai hku nna, ndai laika pa hta, Waimaw Chyum Jawng a mai kaja lam 3 hpe htawng madun mat wa na re. Waimaw Chyum Jawng a dawn jan ai ningja nkau ni hpe tsun ga nga yang, 1) jawng ma nau n law ai majaw, sharin sr/srn ni a masan sa ai sharin achyin ai lam hpe jawng ma langai hpra hkam la lu ai lam, 2) jawng kaw na awng pru sai jawng ma ni a ta tut sasana magam hta shang tsap asi si nga ai lam hte 3) jawng wang makau grup yin tsawm htap ai lam ni nan rai nga ai.(<i>tinang a ga baw snr ningmu hpe, madi shadaw ya ai ningmu madung (ideas) 2 snr 3 daram hte shaleng ai laika ngau a akri (Thesis Statement with 2 or 3 main ideas to support your topic or opinion)</i>)</p>
<p>Ga Hkum 1(Body 1)</p> <p>-Ga Hkumhkrang 1: ga baw hpe madi shadaw ya ai ga baw, ga yan 1 (topic sentence 1) (<i>shawng ningnan, first of all</i>)</p> <p>-Dai ga baw, ga yan hte seng ai (topic sentence) hpe sakse hte hkarak, madi shadaw pawm ya ai ga yan snr ningmu ni (supporting details).</p> <p>Lahta na ga baw, ga yan (topic sentence) hte mahkri n shawn n seng ai lam ni, dai ga baw ga yan hpe grau n-gun kya ung-ang shangun ai, ga yan ni hpe n mai ka shalawm ai (do not include the ideas that are not relevant</p>	<p>Ga baw hpe madi shadaw ai ga baw gayan 1(topic sentence or main idea 1)</p> <p>Dai ga baw ga yan hpe sakse hte, madi shadaw ai lam (supporting details)</p> <p>Ga hkum 1(Body 1)</p> <p>Shawng nnan hku na, Waimaw Chyum Jawng hta, jawng ma, nau n law ai gaw, jawng ma ni a hpaji lam hpe, grai tang du shangun nga ai (<i>ga baw kaba hpe madi shadaw ya ai ga baw ga yan 1: topic sentence 1</i>). Waimaw Chyum Jawng sharin tsang</p>

⁹ Laika ngau a akri (thesis statement) ngu ai gaw nse rawng ai ga yan, ga gumhpawn laika snr laika ngau langai a nse rai nga ai.

<p>with the topic sentence, weaken the topic sentence, and confuses the topic sentence) (transition sentence: ningmu ningnan ni hpe, bai ka sa wa sana re majaw, si mani ai ga si/ga yan hte htawt sit ai lam: g.shd., “<i>matut nna, bai nna bawng mayu ai gaw, matut bawngban mat na ga baw snr ningmu gaw</i>” ngu ai ga matut (<i>conjunction or linking words</i>) ni lang let, mai ka shagawp ai).</p>	<p>gawkw shagu hta, jawng ma nau n law ai majaw, jawng ma ni gaw, sharin sara/saranum ni a hpring tsup ai myit (myit maju jung ai lam) bang ai lam (full attention) hte atsawm sang lang jahpra dan ai lam, hkam la lu ma ai. N chye na ai lam ni nga yang mung, jawng ma nau n law ai re majaw, atsawm sha sanglang jahpra dan ai hpe, hkam la lu ma ai. Dai sha n rai, jawng ma ni a assignments ni hpe mung, atsawm sha jep ya lu let, ra ai lam hta atsawm hpaji jaw ai hpe, hkam la lu ai majaw, jawng gawkw kata sha n rai, jawng a hpaji lam hta, grai tang du ai ngu mu lu nngai. Lama jawng ma she, grai law yang gaw, jawng ma langai hpra a gawng kya lam hpe, sr/srn ni hku nna dai ram tang du hkra, lu sharai jahkum shatsup ya lu na n rai nga ai (<i>ga baw ga yan hpe akri akrai sakse ni hte madi shadaw ai lam ni: supporting details</i> with evidence, tinang <i>shaw da ai ga baw ga yan hpe sakse ni hte hkarak madi shadaw ai lam ni re</i>). Dai hku hkarak ai hku sharin hkam la ngut nna, jawng yu sai jawng ma ni mung, kaja wa nan sasana ginra hta asi si ma ai.(<i>transition sentence: ningmu ningnan hpe bai ka sa wa sana re majaw, si mani ai ga si/ga yan hte htawt sit ai lam, ga hkumhkrang 1 hte lahkawng a lapran mahkrai hkrai ya ai ga yan mung re</i>).</p>
<p>Ga Hkum 2(Body 2) -ga baw kaba hpe, madi shadaw ya ai ga baw ga yan 2 (topic sentence 2) <i>ningmu lahkawng hku nna(secondly)</i> dai ga baw, ga yan (topic sentence) hpe sakse ni hte hkarak madi shadaw pawm ya ai ga yan snr ningmu ni (supporting details). Lahta na ga baw, ga yan (topic sentence) hte mahkri n shawn n seng ai</p>	<p>Ga baw hpe madi shadaw ai ga baw, ga yan 2(topic sentence 2) Dai ga baw hte seng ai ga yan hpe, sakse hte madi shadaw ai lam (supporting details) Ga Hkum 2(Body 2) Matut nna(<i>ga matut: linking word or conjunction</i>) Waimaw Chyum Jawng a hkarak ai lam hpe, tsun ga nga yang, jawng ma dingsa ni kangka sadi dung</p>

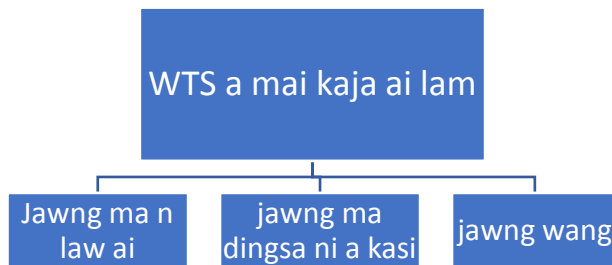
<p>lam ni, dai ga baw, ga yan hpe grau n-gun kya ung-ang shangun ai ga yan ni hpe, n mai ka shalawm ai (do not include the ideas that are not relevant with the topic sentence, weaken the topic sentence, and confuse the topic sentence).</p> <p>ga baw, ga yan hpe madi shadaw na matu shingdaw dangrang ai lam ni mai galaw ai (compare and argue to support your topic sentence)</p> <p>(<i>transition sentence</i>: ningmu ningnan hpe bai ka sana re majaw, si mani ai ga si/ga yan hte htawt sit ai lam: g.shd., “matut nna” ngu ai ga si ni lang nna: continue to discuss)</p>	<p>let, nawku hpung ni hta ap nawng dawjau nga ai lam nan rai nga ai(ga baw kaba hpe madi shadaw ya ai <i>ga baw hte seng ai ga yan 2: topic sentence 2</i>). Jawng langai hkrak, n hkrak hpe, daw dan ga, nga yang dai jawng hta lung ngut sai ni hpa galaw nga ai, gara hku galaw nga ai, ngu ai hta mung grai mahta nga ai re. Waimaw Chyum jawng kaw na, jawng yu mat sai jawng ma shagu hpe yu ai shaloi gaw, tinang ang ai buga snr sasana ginra ni hta, kang ka let, ap nawng nga ai gaw, jawng a arawng sadang mung rai nga ai. Magam gun manu ai pa ga hta sha n rai, bum lang hkaraw tawt lai let, sa ra ai yak dik sai shara ni hta mung, ap nawng nga ai lam ni gaw, anhte yawng a matu n-gun lu hpa nan rai nga ai law. Sawlaw, Htawlaw ginra ni hta, hpung masha law law mung, Campaign hkrun lam ni hta, Waimaw Chyum Jawng a hkrak ai lam hpe, jawng ma dingsa ni a ap nawng daw jau ai myit jasat hpe, yu let nachying shakawn nga ma ai. (<i>ga baw, ga yan hpe akri akrai madi shadaw ai lam ni: supporting details, ndai gaw, tinang shaw da ai ga baw, ga yan hpe sakse ni, mahkrum madup ni hte hkrak, madi shadaw ai lam ni re</i>). Ndai daram hkrak ai jawng ma ni hpe, shalat ai Waimaw Chyum Jawng a lam hpe, atsawm myit yu ai shaloi, jawng wang tsawm htap shim lum ai majaw re hpe mung, matut nna myit yu mat wa na re.(<i>htawt sit ga yan: transition sentence, Ga hkumhkrang 2 hte ga hkumhkrang 3 lahpran mahkrai hkrai mahkri jashawn ai lam</i>)</p>
<p>Ga Hkum 3(Body 3) -Ndai hta gaw, tinang a ga baw hpe, madi shadaw ya ai ga baw ga yan 3</p>	<p>Ga baw hpe, madi shadaw ai ga baw, gayan (topic sentence) Dai ga baw, ga yan hpe sakse hte,</p>

<p>(topic sentence 3). -Hpang jahtum na ningmu gaw (Finally). dai ga baw, ga yan (topic sentence)3 hpe madi shadaw pawm ya ai ga yan snr ningmu ni (supporting details). -ngangkang sanglang ai sakse hte, hkrak lu dara snr ka yang gaw, grau hkrak ai, <i>g.shd., dai laika buk kaw tsun da ai hte maren, dai hpaji jau ya (scholar) tsun ai hte maren nga yang, dai hpaji rit kawp tara ga shawn (theory) hku nga yang, ngu ai ga shingni ni hpe lang let (better to support your topic sentence with clear and strong evidences).</i></p>	<p>madi shadaw ai lam (supporting details) Ga Hkum 3 (Body 3) Jawng ma n law ai lam hte, jawng ma dingsa ni a ap nawng daw jau ai lam ni sha n rai, Waimaw Chyum Jawng a mai kaja lam gaw, jawng wang makau grup yin tsawm htap shim lum ai majaw mung rai nga ai (<i>ga baw kaba hpe madi shadaw ya ai ga baw ga yan 3: topic sentence 3</i>). Chyum Jawng wang dam lada ai majaw, jawng ma ni laika hti, bungli galaw ba ai ten hta, tsit tsawm jawng wang loi gayin mada ai hte, ba hkoi let, myit n-gun ni bai lu la ma ai. Jawng wang makau grup yin shuk shak ai lam n nga ai majaw, jawng ma ni hkam ja zet nna, kaja ai ningmu hpe myit sawn shapraw lu ma ai. Dai sha n rai, jawng wang kata na jahpawt jau jau Karai hpe, nawku ai nsen ni, akyu hpyi ai nsen ni gaw, jawng ma ni a wenyi lam hpe, rawt jat kaba shangun lu nga ai .(<i>ga baw, ga yan hpe akri akrai madi shadaw ai lam ni: supporting details, ndai gaw tinang shaw da ai ga baw, ga yan hpe sakse ni, mahkrum madup ni hte hkrak madi shadaw ai lam ni re</i>)</p>
<p>Ga Dim (Conclusion) -jahta bawngban ngut sai ga baw, ga yan (topic sentences) shagu hpe, ga shingni gale nna, ginchyum na shara re(<i>summarize the main ideas by paraphrasing: in a nutshell, to sum up, in summary</i>) tinang buga ginra byin da masa hta, hkan nna tinang bawngban jahta dara ai lam ni hte myit mang shachyaw yu ai lam (Reflection) mai galaw ai(<i>g.shd., Ginchyum nna, yu ga nga yang, lahta e bawngban lai wa sai ni hpe ginchyum yu nga nga yang, dai re majaw lahta e htawng madun lai wa sai hte maren</i>)</p>	<p>Ga baw, ga yan shagu hpe ginchyum na(<i>summarize</i>) Myit mang shachyaw na(<i>reflect</i>) Lahta e Waimaw Chyum Jawng a mai kaja lam ni hpe, bawngban sai hte maren ginchyum ga nga yang, Waimaw Chyum Jawng a n-gun ja ai lam ni gaw, sara saranum ni a jawng ma ni hpe hpring tsup ai ladat ni hte, lanawn lakawn aten jaw sharin jahpat ya lu ai lam ni, awng pru jawng ma ni kangka ai hte, ap nawng daw jau nga ai lam ni hte, jawng wang dam lada tsawm htap nna, wenyi myit masin hte, hpaji lam ni hpe, pawm ya lu ai jawng wang ni a majaw ni nan rai nga</p>

	<p>ai law. (<i>ga shingni gale let bawngban ngut chyalu ningmu 3 hpe ga ginchyum ai</i>). Dai majaw chyum jawng lung na matu, yaw shada nga ai ramma ni, kanu kawa ni hpe, mai kaja lam law law hte, Madu Yesu a sakse tai nga ai Waimaw Chyum Jawng de Karai mungga sa hkaja let, Karai a sasana magam hta rau shang tsap na hkap tau la nga ga ai law. (<i>myit mang shachyaw n yu ai lam: reflection</i>)</p>
--	--

Lahta na ladat (strategy) hpe, lang let myit kap hkra ka shalau la ai hte seng ai laika ngau kadun langai (a persuasive essay) hpe ka yu ai shaloi:

Kadun ai hku sumla hte hkrak, myit shachyaw hpang ai shaloi:



Matsing: Matut nna, Waimaw Chyum Jawng a hkrak ai lam ni hpe, tsun ga nga yang, lamu ga man 4 kaw na jawng ma ni, sa lung nga ai lam hte Jawng hta Chyurum Wunpawng ga hpan hkum hkra, shaga ai lam ni mung, Jawng a laklai ai rudi maka ni nan rai nga ai law. Ga shadawn, Sinpraw hkran Miwa Mung na Chyurum Wunpawng sha jawng ma ni, sinna hkran India kaw na Chyurum Wunpawng jawng ma ni, Waimaw Chyum Jawng hta Karai Mungga sa du hkaja nga ma ai. Aga hte seng nna, tsun ga nga yang mung, Karai jaw ai Jinghpaw, Lachid, Zaiwa, Lhaovo, Miwa, Hindi, Myen, English, Nung, Rawang, Lisu ga ni yawng hpe, jawng wang hta, shaga nga ai lam gaw, grai manu dan ai lam nan rai nga ai law.

Waimaw Chyum Jawng A Mai Kaja Ai Lam Nkau Mi

Ga Hpaw

Myen Mungdan hta, chyum jawng ni law law nga sai hpe chye lu ai. Jawng shagu hta gawng kya lam nga ai zawn, maga mi hta mai kaja

lam ni mung, nga shajang ma ai. Dai hte maren, anhte Waimaw Chyum Jawng hta mung, gawng kya lam ni law law nga na re. (*ga baw na ga si ni hpe ga shingni gale let ka shatsawm ai+tinang a ningmu ni hpe mai ka shalawm ai*). Rai tim, ngai hku nna ndai laika pa hta Waimaw Chyum Jawng a mai kaja lam 3 hpe, htawng madun mat wa na re. Waimaw Chyum Jawng a dawn jan ai ningja ni hpe tsun ga nga yang, 1) jawng ma nau n law ai majaw, sharin sr/srn ni a, masan sa ai sharin achyin ai lam hpe, jawng ma langai hpra hkam la lu ai lam, 2) jawng kaw na awng pru sai jawng ma ni a, ta tut sasana magam hta, shang tsap asi si nga ai lam hte 3) jawng wang makau grup yin tsawm htap ai lam ni nan rai nga ai. (*tinang a ga baw snr ningmu hpe madi shadaw ya ai ningmu madung(ideas) 2 snr 3 daram hte shaleng ai laika ngau kadun a akri (Thesis Statement with 2 or 3 main ideas to support your topic or opinion)*)

Ga hkum 1(Body 1)

Shawng nnan hku na, Waimaw Chyum Jawng hta, jawng ma nau n law ai gaw, jawng ma ni a hpaji lam hpe, grai tang du shangun nga ai (*ga baw kaba hpe madi shadaw ya ai ga baw hte seng ai ga yan 1: topic sentence 1*). Waimaw Chyum Jawng sharin tsang gawk shagu hta, jawng ma nau n law ai majaw, Jawng ma ni gaw sharin sara/saranum ni kaw na hpring tsup ai myit maju jung ai lam (full attention) hte atsawm sanglang jahpra dan ai lam, hkam la lu ma ai. N chye na ai lam ni nga yang mung, jawng ma nau n law ai re majaw atsawm sha sanglang jahpra dan ai hpe hkam la lu ma ai. Dai sha n rai jawng ma ni a assignments ni hpe mung atsawm sha jep ya lu let, ra ai lam hta, atsawm hpaji jaw ai hpe, hkam la lu ai majaw, jawng gawk kata sha n rai, jawng a hpaji lam hta, grai tang du ai ngu mu lu nngai. Lama jawng ma she grai law yang gaw, jawng ma langai hpra a gawng kya lam hpe, sr/srn ni hku nna, dai ram tang du hkra, lu sharai jahkum shatsup ya lu na n rai nga ai (*ga baw ga yan hpe akri akrai sakse ni hte, madi shadaw ai lam ni: supporting details with evidence, tinang shaw da ai ga baw ga yan hpe sakse ni hte hkrak madi shadaw ai lam ni re*). Dai hku hkrak ai hku sharin hkam la ngut nna, jawng yu sai jawng ma ni mung, kaja wa nan sasana ginra hta, asi si ma ai. (*transition sentence: ningmu ningnan hpe bai ka sa wa sana re majaw, si mani ai ga si, ga yan hte htawt sit ai lam, ga hkumhkrang lahkawng hte lahkawng a lapran mahkrai hkrai ya ai ga yan mung re*).

Ga Hkum 2(Body 2)

Matut nna (*ga matut: linking word or conjunction*) Waimaw Chyum Jawng a hkarak ai lam hpe tsun ga nga yang, jawng ma dingsa ni kangka sadi dung let nawku hpung ni hta ap nawng dawjau nga ai lam nan rai nga ai (*ga baw kaba hpe madi shadaw ya ai ga baw hte seng ai ga yan 2: topic sentence 2*). Jawng langai, hkarak n hkarak hpe daw dan ga nga yang dai jawng hta lung ngut sai ni hpa galaw nga ai, gara hku galaw nga ai ngu ai hta mung grai madung nga ai re. Waimaw Chyum Jawng kaw na, jawng yu mat sai jawng ma shagu hpe, yu ai shaloi gaw tinang ang ai buga snr sasana ginra ni hta kangka let, ap nawng nga ai gaw, jawng a arawng sadang mung rai nga ai. Magam gun manu ai, pa ga hta sha n rai bum lang, hkaraw tawt lai let, sa ra ai yak dik sai shara ni hta mung, ap nawng nga ai lam ni gaw, anhte yawng a matu n-gun lu hpa nan rai nga ai law. Sawlaw, Htawlaw ginra ni hta, hpung masha law law mung Campaign hkrum lam ni hta Waimaw Chyum jawng a hkarak ai lam hpe, jawng ma dingsa ni a ap nawng daw jau ai myit jasat hpe yu let, nachying shakawn nga ma ai. (*ga baw hte, seng ai ga yan hpe akri akrai madi shadaw ai lam ni: supporting details, ndai gaw tinang shaw da ai ga baw, ga yan hpe sakse ni, mahkrum madup ni hte hkarak madi shadaw ai lam ni re*). N dai daram hkarak ai jawng ma ni hpe, shalat ai Waimaw Chyum Jawng a lam hpe atsawm myit yu ai shaloi, jawng wang tsawm htap shim lum ai majaw re hpe mung, matut nna myit yu mat wa na re. (*htawt sit ga yan: transition sentence, Ga hkum 2 hte ga hkumhkrang 3 lahpran mahkrai hkrai mahkri jashawn ai lam*).

Ga Hkum 3 (Body 3)

Jawng ma n law ai lam hte, jawng ma dingsa ni a ap nawng daw jau ai lam ni sha n rai, Waimaw Chyum Jawng a mai kaja lam gaw, jawng wang makau grup yin tsawm htap shim lum ai majaw mung rai nga ai (*ga baw kaba hpe madi shadaw ya ai ga baw hte seng ai ga yan 3: topic sentence 3*). Chyum Jawng wang dam lada ai majaw, jawng ma ni laika hti, bungli galaw ba ai ten hta, tsit tsawm jawng wang loi gayin mada ai hte ba hkoi let myit n-gun ni bai lu la ma ai. Jawng wang makau grup yin shuk shak ai lam n nga ai majaw, jawng ma ni hkam ja zet nna, kaja ai ningmu hpe myit sawn shapraw lu ma ai. Dai sha n rai, jawng wang kata na, jahpawt jau jau Karai hpe, nawku ai nsen ni, akyu hpyi ai nsen ni gaw jawng ma ni a, wenyi lam hpe rawt jat kaba shangun lu nga ai. (*ga baw*

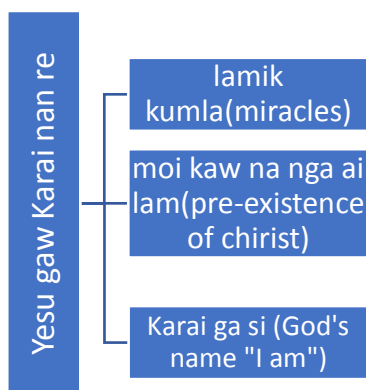
hte seng ai ga yan hpe akri akrai madi shadaw ai lam ni: supporting details, ndai gaw tinang shaw da ai ga baw ga yan hpe sakse ni, mahkrum madup ni hte hkrak madi shadaw ai lam ni re)

Ga Dim

Lahta e, Waimaw Chyum Jawng a mai kaja lam ni hpe, bawngban sai hte maren, ginchyum ga nga yang, Waimaw Chyum Jawng a dawn jan ai ningja ni gaw sara saranum ni a jawng ma ni hpe, hpring tsup ai ladat ni hte, lanawn lakawn aten jaw, sharin jahpat ya lu ai lam ni, awng pru jawng ma ni, kangka ai hte, ap nawng daw jau nga ai lam ni hte, jawng wang dam lada tsawm htap nna, wenyi myit masin hte, hpaji lam ni hpe, pawm ya lu ai jawng wang ni a majaw ni nan, rai nga ai law. *(ga shingni gale let bawngban ngut chyalu ningmu 3 hpe ga ginchyum ai)*. Dai majaw, chyum jawng lung na matu yaw shada nga ai ramma ni, kanu kawa ni hpe, mai kaja lam law law hte, Madu Yesu a sakse tai nga ai Waimaw Chyum Jawng de, Karai mungga sa hkaja let, Karai a sasana magam hta, rau shang tsap na hkap tau la nga ga ai law.*(myit mang shachyaw yu ai lam: reflection)*.

Matut nna dangrang ai hte seng ai, karai masa laika ngau hte, ga shadawn jaw tang madun mat na re (a short argumentative theological essay).

Gadun ai hku sumla hte hkrak, myit shachyaw hpang ai shaloi:



Yesu Gaw Karai Kasang Teng Sha Rai Nga Ai Lam

Ga Hpaw

Chyum Laika buk ni hta, Yesu hpe Karai Kasang hku asan sha, ading tawk tang madun ai lam loi yawm ai zawn mu lu ai. Kabu gara shiga laika ni hta mung, g.shd., Marku 10:45 hte kaga chyum daw ni hta

mung, Yesu gaw shi hkum shi “Masha Kasha” ngu ai mying hpe mahtang grau ra sharawng lang ai hpe mu lu ai. Dai majaw, chyum ninghkrin nkau gaw Yesu hpe Karai hku n mu ma ai. Nkau nawku hpung ni, g.shd., anhte a makau grup hta pyi Yesu hpe Karai hku n sharin, n hkap la ai nga ai. *(ga baw hpe ga shingni gale let ka shatsawm ai+tinang a ningmu ni mai ka shalawm ai)*. Rai tim ndai laika pa hta e, Yawhan a kabu gara shiga laika hta mahta nna *(tinang a sawk sagawn shang wang shagyip kau ai lam)* Yesu gaw, teng sha Karai Kasang nan re ai lam hpe, sakse sakgan masum hte dangrang bawng ban mat wa na re. 1) Yesu galaw ai lamik kumla ni, 2) Yesu gaw moi chyaloi nhkoi kaw na nga ai lam ni hte 3) Ga Shaka Dingsa hta Karai Kasang hpe chyu sha jaw ai snr lang ai Karai mying hpe Yesu lang da ai lam ni gaw, Yesu gaw Karai Kasang nan re hpe htawng madun nga ai. *(tinang a ga baw snr ningmu hpe madi shadaw ya ai ningmu madung(ideas) 2 snr 3 daram hte shaleng ai laika ngau a akri (Thesis Statement with 2 or 3 main ideas to support your topic or opinion)*.

Ga Hkum 1(body 1)

Shawng ningnan, Yawhan Laika hta Yesu galaw ai mauhpa lamik kumla ni gaw, shi Karai Kasang re hpe, asan sha htawng madun nga ai *(ga baw kaba hpe madi shadaw ya ai ga baw hte seng ai ga yan 1: topic sentence 1)*. G.shd., Israela ni a Hkanan hkrun lam hta, Mawshe hku nna zaibru jang hkrun lam hta, muk lu sha daw lu ai wa gaw, Karai Kasang chyu sha rai nga ai (Pru 16). Dai hte maren sha Yesu mung, lu sha n mai lu ai shara hta, masha hkying manga hpe, lu sha daw ai lam gaw, Yesu gaw Ga Shaka Dingsa hta Karai Kasang sha lu galaw ai amu hpe, galaw ai lam rai nga ai (Yawhan 6). Dai sha n rai, Ga Shaka Dingsa hta Karai Kasang sha, lu galaw ai, si ai kaw na hkrung sharawt la ai magam bungli hpe, (Karai gaw myihtoia Elia hku nna Zerephta mare na gaidan jan a kasha hpe, hkrung sharawt la ai, 1 Hkawhkam 17:17-24) mung, Yesu gaw Lazaru hpe hkrung sharawt la ai hku nna, shi Karai rai nga ai hpe, ta tut magam bungli ni hte, madun ai rai nga ai (Yawhan 11:38-44). *(ga baw hte seng ai ga yan hpe akri akrai sakse ni hte madi shadaw ai lam ni: supporting details with evidences, tinang shaw da ai ga baw hte seng ai ga yan hpe sakse ni hte hkrak madi shadaw ai lam ni re. Ndai ga hkum 1 snr ga gumhpawn hta ga baw hte seng ai ga yan 1(topic sentence 1) hpe*

lamik kumla 2 (mukdaw ai lamik kumla+hkrung sharawt la ai lamik kumla) lang let, madi shadaw ai hpe mu lu ai).

Ga Hkum 2(body 2)

Matut nna, tsun ga nga yang (*ga matut*), Yesu a moi chyaloi kaw na, nga ai lam mung (the pre-existence of Christ) shi Karai Kasang re hpe, madun nga ai. (*ga baw kaba hpe, madi shadaw ya ai ga baw hte seng ai ga yan 2: topic sentence 2*); *lawu e tsun jahta dara ai lam ni ma hkra gaw, ndai ga baw ga yan 2 (topic sentence 2) hpe madi shadaw, pawm shaleng ai baw rai ra ai*)

Yuda ni gaw, Yesu hpe “nang manga shi ning pyi n hpring shi ai masha wa, Abraham hpe mu ga ai ngu ai gaw, n mai byin ai” ngu tsun ai. Yesu bai nhtang tsun ai gaw, Abraham pyi garai n nga shi ai ten kaw nga sai lam, asan sha tsun ai lam gaw, Yesu gaw moi chyaloi nhkoi kaw na, nga ai Karai Kasang nan re hpe, ga shingni kawai let, tsun ai nan rai nga ai (Yawhan 8:57-59). Lama wa, Yesu gaw shinggyim masha sha rai n yang gaw, Abraham n nga shi ten kaw na nga ai lam tsun na n rai nga ai. (*ga baw hte seng ai ga yan hpe akri akrai sakse ni hte, madi shadaw ai lam ni: supporting details with evidence, tinang shaw da ai ga baw, ga yan hpe sakse ni hte hkrak madi shadaw ai lam ni re*).

Ga Hkum 3(body 3)

Bai nna, (*ga matut*) Yesu gaw, teng sha Karai Kasang re ai lam gaw, shi lang da ai Karai ga si ni hte chye lu nga ai (*ga baw kaba hpe madi shadaw ya ai, ga baw hte seng ai ga yan 3: topic sentence 3*); *lawu e tsun jahta dara ai lam ni ma hkra gaw, ndai ga baw ga yan 2 (topic sentence 2) hpe madi shadaw, pawm shaleng ai baw rai ra ai*). Yawhan laika hta, Karai ga si rai nga ai “ngai gaw (I am ἐγώ εἰμι)” ngu ai ga si hpe 7 lang tup, lang da ai mu lu nga ai. Dai ni gaw: 1) ngai gaw, asak muk re (Yawhan 6:35-48), 2), Ngai gaw, mungkan ga a nhtoi rai nga ai (Yawhan 8:12, 9:5), 3) Ngai gaw, chyinghka hku re (Yawhan 10:7), 4), Ngai gaw, sagu rem kaja re (Yawhan 10:11-14), 5) Ngai gaw, bai hkrung rawt ai lam hte asak re, 6) Ngai gaw lam, tengman ai hte asak re, 7) ngai gaw teng man ai tsabyi ru re. N dai “ngai gaw I am” Greek hku ἐγώ εἰμι ngu ai ga si gaw, Ga Shaka Dingsa hta Karai Kasang a mying hpe tsun ai shaloi lang ai hpe mu lu ai. G.shd., Karai Kasang gaw, Israela myu masha ni hpe, Egutu ni a dip up sai chyup ai kaw na, hkye shalawt na matu

shatsam ai ten Karai Kasang shi hkum shi nan, Mawshe hpe shachyen ya ai (*ngai ngu ai wa ngai rai nga ai εῷ εἶμι*) Karai a mying nan rai nga ai. Mawshe gaw, shi a amyü hpe, hkyela na matu Egutu de du ai shaloi mayam, yam hkrum nga ai Israela ni gaw “dai Karai Wa a mying kaning nga a ta? Kaning re ai wa nang hpe, shangun dat nta? Ngu nna san ai shaloi, Karai Kasang tsun wu ai gaw, “ngai ngu ai wa εῷ εἶμι” shangun dat ai ngu tsun na matu, Mawshe hpe matsun dat ai (Pru 3:14). Greek laika hku ka da ai, Ga Shaka Dingsa kaw na Pru 3:14 LXX hta mung, Greek hku ka da ai Yawhan laika na (*ngai ngu ai wa, εῷ εἶμι*) ga si gaw, maren bung ai hku lang da nga ai. Dai majaw dangrang mayu ai gaw, Ga Shaka Dingsa hta Karai Kasang hpe sha, shamying ai Karai ga “ngai ngu ai wa εῷ εἶμι” hpe Yawhan laika hta Yesu shi nan lang da ai re majaw, Yesu gaw Karai Kasang nan re ai hpe, asan sha chye na lu ga ai. (*ga baw hte seng ai ga yan hpe akri akrai madi shadaw ai lam ni: supporting details, ndai gaw, tinang shaw da ai ga baw ga yan hpe, sakse ni, chyum daw ni hte hkrak, madi shadaw ai lam ni re*).

Ga Dim

Lahta e, bawngban lai wa sai ni hpe, ginchyum yu nga nga yang (*gin chyum ga shingni*), Yesu gaw, Karai Kasang re hpe, myit ung ang na lam hpa n nga ai. Lahta e tsun dara madun dan sai chyum laika sakse ni rai nga ai, Yesu galaw ai lamik kumla ni, shi a moi chyaloi nhkoi kaw na nga ai lam hte, shi nan jai lang ai Karai ga si ni gaw, Yesu gaw Karai Kasang majing rai nga ai lam, asan sha htawng madun nga sai re. (*jahta bawngban ngut sai hpe, bai ginchyum let shangang shakang ai lam*). Dai re majaw, daini makau grup yin hta Yesu hpe Karai n re, myihtoi sha re, nga amyü myu tsun sharin nga ai ten hta, Yesu gaw Karai majing nan re lam Yawhan laika hta mahta nna anhte chye lu sai hte maren Yesu hpe kam sham manoi manat ai lam hta, n yawm ai sha grau kangka sadi dung let shi a magam hta dawjau nga ga law. (*myit mang shachyaw yu ai lam: reflection*).

Ntsa Lam Amat Jaw Hkrang (Marking Scheme)¹⁰

1. Mahta ai laika ni(references) nga ai kun?	Sawk sagawn laika ngu ai gaw, masha ni ka da ai hpe tsun bawngban jahta	1%
--	---	----

¹⁰ IELTS and TOEFL Essay Sumtang Laika Amat Jaw Hkrang hte shingdaw yu mai ai(Cf. IELTS and TOEFL Essay Marking Scheme).

	let, tinang a ningmu ni hpe mung htawng madun ai lam re.	
2.Ga baw hte, mahkri shawn ai kun? (topic relevance)	Ga baw hte, mahkri shawn ai hku kade ram lu tang madun ai (how well you present the topic) -sakse ni hte, madi shadaw lu ai lam ni (support with evidences)	4%
3. Laika ngau hpe Lachyum sanglang ai hku+kahkyin gumdin ai hku tang madun lu ai lam (Coherent and cohesion)	Laika ngau ting hpe sanglang ai hku tang madun lu ai lam -ga shingni gale let tang madun lu ai lam -gagumhpawn snr laika pang(paragraph) shagu hta ga baw hte seng ai ga yan (topic sentence) ni hte tang madun lu ai lam -ga matut ni hpe, htuk manu ai hku jai lang ai lam	3%
4.Ga hkum hte seng nna jaw hkrak ai hku tang madun lu ai lam (Lexical)	-Hkrak manu ai hpaji ga munu, snr hpaji ga lareng hkum ni hpe kade ram hkrak hkra jai lang let, tang madun lu ai. -Hpaji ga munu snr hpaji ga lareng ni jai lang lu ai lam (use of academic vocabularies) -ga shingni gale let, tang madun lu ai lam(paraphrasing), ga si shachyaw ai masa(spelling)	1%
5.Lik tara hte hkrak tang madun lu ai lam (Grammar) (laika ka ai hpaji, ladat)	Na a lik tara jai lang ai lam kade hkrak ai (a wide range of grammar) -lik ka hkrang, hpan law law jai lang akyu jashawn lu ai lam, -ga hkring, ga sa ni hpe jaw hkrak ai hku jai lang ai.	1%

Daw Kaba 3: WTS Sawk Sagawn Laika Tang Shawn Hkrang WTS Research Proposal

Ga Hpaw

Daini na ten hta, dakkasu jawng nkau mying kaba ai lam (reputation) a ru npawt gaw, sawk sagawn ai lam hta, ningtawn ai majaw, rai nga ai. Jawng ni a madang (ranking) masat ai shaloi mung, sawk sagawn ai lam hta madang kade nga ai (ladat jaw jaw sawk da ai, wuhpawng a matu akyu nga ai- research quality) ngu ai hta mahta nna, masat ai hpe chye lu ai. Dai majaw, WTS mung sawk sagawn ai hpe ladat jaw jaw, anhte a nawku hpung, wuhpung wuhpawng a matu akyu nga ai sawk sagawn ai lam ni, hpung woi kaja byin lu na matu ra ai atsam ningja ni hpe, rudi gawn, sawk hkaja, maram masam bawngban let, anhte a wuhpung wuhpawng, sha n rai, Mungkan hpe du hkra daw jaw ai ni tai na matu rai nga ai.

Ndai laika pa hta e WTS Sawk Sagawn Matsing Sumhting Laika Tang Shawn Hkrang hta lawm ging ai akri nkau ni (11) hpe dang di ai daram, shachyen tsun jahpra mat wa na re. Loi ai hku tsun ga nga yang sawk sagawn ai lam hta, ga san kaja ni chye san na hte, dai ga san ni hpe jaw hkrak mahkri shawn ai hku, hta na matu grai ahkyak nga ai.¹¹ Sawk sagawn tang shawn hkrang hpe, lawu na ga san ni hte myit yang loi na re. *Hpa hpe sawk na, hpa ga san hpe sawk na, kaning re ai hpaji shingwang hpe sawk na* (what do you want to study, what questions do you want to answer? (Sawk sagawn ga baw, sawk sagawn ga san (research title+research question+ research field or area)

Kadai Karum na (Hpaji Jaw, supervisor)

Hpa majaw, dai ga baw hpe sawk ra ai (why does this title need to be researched?)

Hpa yaw shada lam nga ai majaw kun? (why do you aim to achieve?)

Dai hpe sawk na, lik nhprang gaw hpa ni rai ta? Lik bai sawk yu ai lam (literature review)

¹¹ Writing Thesis and Dissertation Proposals:
https://faculty.chass.ncsu.edu/garson/PA803/Dissertation_Proposal_Guide.pdf (Accessed: 1 March 2020)

Gara hku sawk na? Sawk ra ai ga baw, ga san ni hpe, gara ladat hte sawk na (how will you answer the research question?)

Dai hku sawk sagawn ai majaw, hpa akyu ni hkam la lu na? Societal and church relevance/applicability

Gara ten sawk na (when do you intend to research?)

Gara kaw sawk na (where will your research take place?)

3.1 Sawk Sagawn Ga Baw, Sawk Sagawn Ga San, Sawk Sagawn Shingwang (Gaiwang)

Sawk Sagawn Ga baw: Sawk sagawn mayu ai ga baw gaw, Waimaw Chyum Jawng a hpaji magam dap (academic department) langai ngai hte mahkri shawn ra ai.

Ga baw a shangwang nau n mai gyip snr nau n mai kaji ai. Maga mi de nau ma n mai dam/ kaba ai. Laning mi daram aten jaw, sawk yang mai ngut ai ga baw rai ra ai.

Hpaji jaw ga: Anhte a wuhpung wuhpawng, nawku hpung hta, chye ra ai, dara hkat nga ai, ung ang nga ai lam, lama ma hpe sawk krawk hpyan, hpya mahtai tam lu yang, anhte a matu akyu grau nga na re. Ga baw ni gaw, lama ma a lam ningdang dara ai (argumentative), gawn dan ai(descriptive), shingdaw hkaja ai lam (comparative analysis), hpyan shaleng ai (expository analysis), maram masam dinglun yu ai(review) lam ni mai byin nga ai. Sawk sagawn hpaji hpan (g.shd., mung masa hpungtang hpaji, music, Karai Masa) hta hkan nna, tinang a sawk sagawn ai hte, htap htuk dik ai sawk hkrang hpe jai lang mat na.

Sawk sagawn ga san: Kaning re ai sawk sagawn ga san hpe, sawk mat wa na. Dai ga san gaw sawk sagawn ai lam hpe, lam woi karum mat wa na. Lik mahkawng ai shaloi mung tinang san da ai ga san hte, ading tawk, seng ai hpe sha mahkawng let bawngban mat wa na.

Sawk sagawn hpaji gaiwang (reseach disciple): g.sh.d., CE, NT, OT, Leadership, Pastoral, Theology

3.2 Sawk Sagawn Laika a Akri (Thesis Statement)

- Sawk Sagawn Laika a kri madung nse gaw, yu reng hkang zing mat na ningmu re (controlling idea)

-Ndai hta, hpa baw hpe ka mat wa na ngu ai hte gara hku zinlum hkyen lajang shinggyin(organize) sa wa na, mawn shatsawm shalat shapraw lajang (how the research will be designed or organized) sa wa na, ngu ai hpe kadun daw hte, tang madun ra ai (where your essay is heading).

Hpaji jaw ga: sawk sagawn kri madung nse gaw, ga yan langai lahkawng daram rai nna, law malawng gaw, ga hpaw a hpang jahtum ga yan ni hta mu lu chye nga ai.

-mai byin ai daram tup hkrak re ai sawk sagawn kri nse nga yang kaja ai (Be as specific as possible)

3. 3 Hpaji Jaw (supervisor)

WTS hpaji dap kaw na sawk sagawn gaiwang (reseach disciple) hta hkan nna, htap htuk manu dik ai hpaji jaw ai sr/srn masat ya na.

3. 4 Sawk Sagawn Ra ai lam a Manghkang Ru Npawt snr Shingdu Mabyin

-Ndai daw hta hpa majaw, sawk na ahkyak a ta? Shawng e sawk da ai ni hta ningra ai lam (flaw), n hkum tsup ai lam (incomplete) nga ai majaw kun? Ningmu hpe sharai mayu ai majaw kun? ngu ai lam ni hpe myit mang ka shalawm ra ai.

-hpa majaw, ndai sawk sagawn ai lam hpe, galaw ra ai lam hpe madi madun ga snr sakse ni hte dara ka na. Tinang a matu, buga, wuhpung wuhpawng a matu akyu nga ai majaw kun?

-ndai hta, tinang a sawk sagawn ai lam gaw, kaga sawk sagawn da chyalu ni hte gara hku shai ai lam mai jahta ai. (significances of your research, how your research differs from other research?)

3.5 Sawk Sagawn Ra Ai Lam A Yaw Shada Lam Ni, Sawk Sagawn Gaiwang Jarit Masat Tawn Ai Lam

- Tinang sawk tam hkaja sa wa ai a, yaw shada lam ni hpe ka na matu re. Yawm htum yaw shada lam 2 gaw nga ging ai.

- Tinang sawk tang madun lu na gaiwang hpe, asan sha tsun shaleng ra ai.

3.6 Madung Lik Nhprang Hte Lik Bai Sawk Yu ai lam

-Tinang jai lang jahta mat wa na laika buk 2 snr 3 hpe shalawm let hpa majaw, gara hku dai laika buk ni hpe tinang a sawk sagawn laika hta jai lang jahta mat na lam ka na.

-Lama ma nga ai kaw na hpang ra ai. Tinang sawk mat wa na lam hta madung jai lang jahta mat wa na, lik nhprang (npawt hkridun) hpe sawk hkrawk dinglun yu ai lam? Tinang sawk sagawn na ga baw hte, ading tawk seng ai/mahkri shawn ai ningmu, dara ai lam, tsun shaleng ai lam hpe, madung hta la let, tsun jahta mat na. Tinang a ga baw hte mahkri shawn hkrup chya rai hkra, ka shachyaw ra ai:-nga chyalu lik ni hpe atsawm chye na na, laika ka ai wa ngu mayu ai hku, chye na na mung ahkyak ai. Dai nga chyalu lik nhprang ni hta gawng kya ai lam, n hkum tsup ai lam hpe loi mi dara na:-dai hku n hkum tsup ai snr chye na shut taw ai, gawng kya lam ni nga ai majaw, ndai hku matut sawk sagawn ra ai lam mai jahta bawngban ai. Sawk sagawn da chyalu lik hta, nang bai matut sawk sagawn ai lam gaw, gara hku bai jahkum shatsup snr, mye shading sharai ya lu na kun? (the added value of your research in the scholarship or contributions to the existing research?)

3.7 Sawk Sagawn Ladat (Methodology)

-sawk sagawn ai bandung du lu na matu gaw, gara hku dai bandung de, du hkra galaw na ngu ai ladat ni grai ahkyak nga ai.

-manghkang hpe gara ladat hte, hpyan hpya wa yu na. G.shd., Yangon sa na ladat (Wanleng, Mawdaw, Nbungli ni nga ai. Dai ladat ni dawn jan ai ningja lam hte gawng kya lam ni mai tang madun ai.

-sawk sagawn laika ting hta, lang mat na ntsa lam ladat (overall or general method) hte daw kaba langai hpra snr ga san langai hpra, a matu tup hkra re ai ladat ni hpe, mai sang lang jahpra dan ai (specific methods for each chapter or each question).

-tinang sawk sagawn mayu ai mahtai, pandung du hkra sa na ladat (methods), sa ai ten lang ra ai arung arai (materials) hte tatut, jai lang mat na ladat mahkrun ni hpe, bawngban htawng madun na shara re.

- ntsa lam tinang sawk sagawn ai lam gaw, ningja hte seng ai sawk sagawn ladat (qualitative research) snr ru hkum shadang hte seng ai, sawk sagawn ladat(quantitative), snr mabyin/masha/shara langai hta mahta nna,

maram masam ai sawk sagawn ladat (case studies) re kun, dai zawn re ai ladat ni hpe mung shalawm na kun?

-tinang ra ai lik nhprang ni hpe, gara ladat hte mahkawng na: ntsa lam maram masam jep yu ai ladat (survey), San & Htai (marai kade hpe san, kaning re ai masha hpe san, gara kaw san na), labau mazing htingnu (archival) hte laika dum kaw sawk sagawn na ladat kun?

-tinang sawk tam ai mahtai ni hpe, gara hku jep sagawn hpyan hpya yu na, gara hku bawngban na.

-sawk sagawn ai lam hta ladat langai hta jan nna, ladat law law lang let mung mai hkaja mat ai.

3.8 Sawk Sagawn Ai A Akyu Chyeju, Mahkri Shawn Ai Lam

- Tinang a sawk sagawn laika a majaw, tinang a wuhpung wuhpawng, nawku hpung, snr dinghkrai hkam la lu na akyu ni

3.9 Daw Kaba Ni A Ntsa Lam Ningmu/Malawm/Daw Kaba Langai hte Langai Mahkri Shawn Ai Lam Ni (Overview of Chapters/The structure of the whole research)

Ga baw hte seng ai laika man (Title page)

Chyeju Dum Ga (Acknowledgements)

Approval sheet (shagrin laika jeman)

Table of contents (Malawm ni)

Table of illustrations (optional) (Saboi hte Sanglang Jahpra ai lam (lama nga yang)

List of abbreviations (Kadun dawk jahpan)

Ga Hpaw: Sawk Sagawn Tang Shawn Hkrang Hpe Sharai Shagrin Ka Mat Mai Ai

-Daw Kaba 1: Lik Bai Sawk Yu Ai Lam

-Daw Kaba 2: Lik Sawk Yu Ai Lam (ga baw, ladat ni daw kaba 1 hte shai ai hku nna)

Daw kaba 3: Sawk Mu Ai Mahtai Ni Hpe Bawngban Ai Lam (findings and disussions)

-Ningmu hpaji jaw mayu ai lam (recommendations or for future research)

Ginchyum: Tinang bawngban ngut sai daw kaba shagu hpe, ginchyum na (ga shingni gale let, paraphrase)

Tinang a byin da masa hta, mahkri jashawn jai lang ai lam (reflection+application)

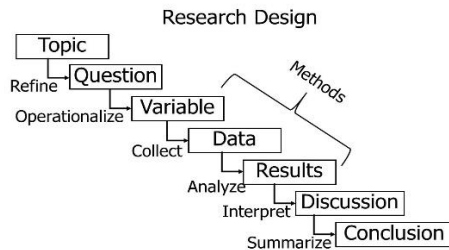
Lawu na sawk sagawn ladat hpajang hkrang hpe yu yu ga (grau nna B.Th jawng ma ni):

Ga baw, ga san,

Lik nhprang mahkawng na (collect data)

Sawk mu ai lam ni hpe jep sagawn maram ding

lik dinglun yu, hpyan hpya yu (analyse results)



Appendixes or Glossary (bai jat shatsup sang lang ai lam ni, lama nga snr ra yang)

Bibliography (Mahta laika jahpan)

3.10 Sawk Sagawn Hkrun Lam Aten Chyarang (Timeline for Conducting Research)

Topic+proposal+collecting main data: March-June

Introduction: July

Chapter 1: August

Chapter 2: September- October

Chapter 3+Conclusion: November-December

January 2nd week: First Draft Submission (Duflat karip ap).

February: Correct, edit, revise, contextualize+final submission

Gabaw+Sawk Sagawn Tang Shawn Laika+Lik Nhprang Mahkawng:

March-June

Ga Hpaw: July

Daw Kaba 1: August

Daw Kaba 2: September-October

Daw Kaba 3+Ginchyum: November-December

January: Ntsa lam yawng ap (First Draft submission) (Duflat karip ap).

February: Kre ap Gram sharai, bai jep, mahkri jashawn+ap

Matsing: Ndai aten chyarang gaw Cov-19 n byin shi ai aten ni hta, mahta nna, ntsa lam ga shadawn hku gran da ai re. Lama wa ndai aten chyarang hta shai wa ai lam ni hpe, WTS academic kaw na lit la woi hparan mat wa na re.

Daw Kaba 4: Lik lagut a lam, Internet lik jai lang ai lam, ga si raw raw lakap shaw la ai lam, ga shingni gale ai lam hte mahta laika ka

hkrang(Plagiarism, Use of Internet Sources, Quoting, Paraphrasing, Footnotes and Bibliography Referencing)

Ndai daw hta e, laika lagut a lam, Internet kaw na laika nhprang ni hpe, ka shaw jai lang ai lam, ga si raw raw lakap shaw la ai lam, ga shingni gale ai lam hte, mahta laika ka hkrang ni hpe tang madun mat wa na re.

4.1 Lik Lagut A Lam (Plagiarism)

Karai hpaji pinra hta mung, hpaji arawn alai (academic ethics) rai nga ai branglang sanglang ai lam (transparency), sari sadang myit ding ai lam (integrity) ni grai ahkyak nga ai.

Tinang la ai shiga snr ningmu a laika ka sara hpe, shut ai hku shagrau ai lam hte, shagrau ai lam n galaw ai (tinang na ningmu zawn ka shaw la ai) lam hpe, hpaji pinra hta n mai galaw ai lam, bawngban sai hte maren, lama na n dum shamyi snr, yaw shada lam n nga ai sha, snr, n chye nna, ka shaw la hkrup yang pyi, tinang ka ai sawk sagawn laika a tsa lam shadang hkun 20% jan nna, tsep kawp n mai ka la na re. Seng ang ai WTS hpaji dap kaw na, htuk manu ai jak ni (plagiarism checker tools) hte jep yu ai shaloi tinang ka da ai sawk sagawn laika pa a tsa lam shadang hkun 20/100% jan gaw, shut ai hku laika ka ai wa hpe shagrau da ai, snr tsep kawp n shagrau da ai rai yang, WTS hpaji dap ni hku nna, laika lagut ngu mai masat wa ai. Raitim masha yawng chye nga chyalu machye machyang, g.shd., “jan gaw sinpraw maga na pru ai” hpe gaw kadai mi ka da tim shagrau ai lam n galaw ra ai. (In academic platform, academic ethics especially transparency and integrity (honesty, trust, reliability) are crucial to implement in conducting research project. Both discrediting sources and citing the sources erroneously are considered as unethical or plagiarism or academic theft in academic research).

4.2 Internet Kaw Na Laika Nhprang Ni Hpe Jai Lang Ai Lam (Use of Internet Sources)

Internet laika man (Internet web pages) hkan na laika nhprang ni lama wa, tinang ka nga ai laika hte (grai) mahkri shawn nna, lang mayu ai rai yang, tinang ka ai laika a tsa lam shadang 5 hta jan nna, tsep kawp n mai ka shaw la na. G.shd., facebook, Wikipedia, ndai ni gaw, kamhpa ging ai hpaji lik nhprang ni (academic sources) n re majaw, n lang na matu n-gun jaw ai. Kaga grau tang du ai, grau kam hpa ging ai ladat, lik

nhprang ni hpe, mahtang jai lang na matu, WTS hpaji dap kaw na n-gun jaw ai re.

- tinang tsun jahta ai, tang madun/dara ai, tinang lang ai lik ka madu hpe, shakawn shagrau (credit) ai lam hpe jaw hkarak ai hku galaw ra ai.

4.3 Ga Si hte Ga Yan Ni Hpe Raw Raw Shaw La Ai Lam (Quotations)

(Quotations are single spaced. Indented 2 inches from each margin and one point smaller than the body text)

Tinang a sawk sagawn laika hta, kaga sawk tam laika buk kaw na, ga si hte ga yan ni hpe, tinang lakap jai lang ai, laika ka sara ka tawn ai hku nna sha, laika ka ai wa a yaw shada lam madung (the original intention of the author) n mat mayu ai majaw, maren raw rai nna “lakap shaw la ai lam” galaw ai rai yang, “single spaced hte ga hpaw, ga pat” *“with quotation mark and single spaced”* hte shagrau ra ai. Maren raw raw, lakap shaw la ai ga yan ni hta, lai nna kaga sawk sagawn laika ni yawng hpe gaw, “double spaced” hte ka ra na.

G.shd., Kachin ni a chyeju madu, Dr. Ola Hanson tsun ai: Nanhte Kachin ni myit hkrum jang hkawhkam lu na” ngu ai hpe, ga si raw raw lakap shaw la (quote) ai shaloi. Dr. Ola Hanson anhte Chyurum Wunpawng sha ni hpe htet da ai gaw:

“Nanhte Kachin ni myit hkrum nga jang, hkawhkam lu na.”

Sadi ra ai lam gaw, sawk tam hti ai laika buk kaw na, ga si hte ga yan ni hpe maren raw raw rai nna “lakap shaw la ai lam” galaw ai rai yang, tinang ka ai, sawk sagawn laika pa a pai hkra “matu nchyan” kaw nna ta yungnu bat masum (2 inches) shagang ya ra ai. Dai “lakap shaw la ai ga yan” ni hpe, ga hkum masat shi (font size point 10) hte ka ra ai. Hpa majaw nga yang, sawk sagawn laika kaw lang ai ga hkum, ga si ni yawng gaw (point 12) hte lang da ai majaw re.

-ningmu ni hpe la ai shaloi, ga shingni gale let (paraphrase) hta la ra ai.

Matsing: WTS academic meeting hta, laika pa lawu na lik ka hkrang (Turabian footnote) hte mahta laika jahpan (bibliography style) lang mat na myit hkrum da ai.

4.4 Paraphrasing (Ga Shingni Gale Ai Lam)

Sawk sagawn ka wa ai shaloi, law malawng gaw, laika ka ai wa a ningmu, tsun dara ai lam ni, ga htau shawn ai lam ni hpe, ga shingni gale let tinang aga hte ka la ra ai (paraphrase). Lama wa laika ka ai wa a laika hpe, ga si raw raw (quotations) hkrai nau law shaw jai lang yang mung, na a laika n rai mat sai. Dai laika ka sara ni a laika, ningmu ni sha rai mat na rai nga ai. Tsun ga nga yang, ga shingni gale ai ngu ai gaw, laika ka sara wa a ningmu hpe lachyum gaw n shai grau sanglang ai hku nna, tinang a ga hte (rewrite with your own words) bai ka ai lam rai nga ai.

G.shd., Kachin ni a chyeju madu Dr. Ola Hanson tsun ai “*Nanhte Kachin ni myit hkrum nga jang hkawhkam lu na*” ngu ai hpe, ga shingni gale(paraphrase) ai shaloi gaw: Anhte Kachin ni shada tsaw ra myit hkrum ai shaloi gaw tinang lamu ga snr tinang amyu a amyu mungdan hpe, tinang nan lu up hkang ai amyu tai na re lam, Sara Kaba Hanson anhte hpe htet da sai re.

Raitim, laika ka ai wa a ningmu ni, lik nhprang ni hpe shut ai hku tang madun ai lam, shut ai hku chye na hpyan ai lam, n mai galaw ai. Dai sha n rai, nang tsun mayu ai de du hkra, snr na a tsun dara mayu ai hpe madi shadaw na matu, shut ai shiga, shut ai ningmu ni hpe, n mai gyin shalat ai. [Most of the times, you should paraphrase ideas from the sources. To put it simply, you should rewrite with your own words more clearly by using synonymous words for the similar ideas described in the sources. You, however, must not misreport, misinterpret and distort sources you use. It is imperative that you not invent data to support your arguments]

4.5 Mahta Laika Ka Hkrang snr Lang Mat Wa Na Lik Nhprang Ka Hkrang (Footnote, Bibliography Referencing)¹²

Ntsa lam, Lik Shagrau Ai Lam hpan mali nga ai lam chye lu ai (Citation designs).

a. Turabian= Lik ka ai wa-lik ga baw (shinggyim masa hpaji ni hta law malawng lang)

¹² Footnote hte Bibliography hpe Sr. Lahpyaw Hawng Hkawng (2012-2013) hku nna, “the Collection of MIT Library Resources (2011-2013),” hta mahta nna ka mahkawng da ai hta bai jahkum shatsup ka da ai re.

- b. MLA= Lik ka ai wa-lik ga baw (shinggyim masa hpaji ni hta law malawng lang)
- c. Turabian= Lik ka ai wa-lik dip shapraw ai shaning
- d. APA= Lik ka ai wa-lik dip shapraw ai shaning (hpungtang hpaji hte seng ai lik ni hta, kade ram naw update byin ai hpe kalang ta chye, mu na matu). [There are four significant citation designs: two author-*title* styles (Turabian style and Modern Language Association MLA style) for humanities subjects and two author-*date* styles (Turabian and American Psychological Association APA style for scientific subjects to easily check *when* the source is published or how much up to date the source is). As in the WTS academic meeting, Turabian style also known as Chicago style (author-title style) has been approved to be applied in writing papers and thesis, the examples how to write footnotes and bibliography below follow the Turabian style.]

WTS academic meeting hta, Turabian footnote (laika pa lawu na lik ka hkrang) and bibliography style (mahta laika jahpan) hpe sawk sagawn laika ni hta, lang mat na matu jawm myit hkum da ai hte maren Turabian hkrang rai nga ai, Lik ka ai wa-lik ga baw (Turabian, author-title) hkrang hte, ga shadawn jaw mat wa na re.

Shawng nnan shamyet shanat laika jahpan ka ai shaloi, chye da mai ai lam ni hpe, tang madun mat na re.

Author's Name, first Name, Surname-Laika Ka Ai Wa a Mying, Rusai Mying

Title-Laika Buk Ga Baw

Edition-Kade lang dip shapraw ngut sai

Volume -laika bap snr laika hkrang masat

Series -Laika buk snr laika bap hti hkum

Editor-jep, hti shagrin ai wa snr laika buk hpe rang dip ya ai wa

Publication City -Laika buk hpe dip shabra ai shara muklum

Publisher -dip shabra ai hkringdat (htangdip gawng)

Page number- Laika man hti/ruhkum

N stands for Footnote (Footnote=Laika pa lawu na lik ka hkrang)

SN stands for Short Footnote form (SN= dai lik hpe sha, hpang kalang bai lang ai shaloi, kadun dawk ka na rai jang)

B stands for Bibliography (B=Mahta laika jahpan)

Laika ka sara langai nga ai laika buk a matu:

4.5.1 Laika Ka Sara Langai Sha, Ka Ai Laika Buk (One Author)

Footnote (Laika pa lawu na lik ka hkrang)

N: Laika Ka Ai Wa (Mying, rusai mying), *Laika Buk Mying* (Dip Shapraw Ai Shara/Muklum: Htangdip Gawng, Shaning), Laika man.

Shawng nnan na ga yan hpe, first line indent ladat lang nna 0.5-inch ahka awak (indent) nna, ga shan kaw na laika pang (paragraph) hpe zawn. (Font size 10, Times New Roman/single space hkrang hte ka ra na)

Zung Bawm Mangshang, *Mung Masa Karai Masa Hpaji* (Myitkyina: Hanson Htangdip Gawng, 2020), 10.

, (: ,), .

Ndai laika buk hpe sha, bai lang na rai yang *ibid* n lang ai sha, laika ka sara a rusai mying hpe la, laika buk ga baw hpe kadun ai hku ka nna, laika man ruhkum (numbat) shalawm ai hku galaw ra ai.

SN: Mangshang, *Mung Masa Karai Masa Hpaji*, 20.

Bibliography (Mahta laika jahpan ka hkrang)

B: Hanging indent ladat hpe, lang nna numbat 2 ga yan hpe 0.5-inch shagang ra ai. Single spaced hte galaw ra ai. (Apply half-inch hanging indents for each entry). Laika man numbat n ka ra ai.

Rusai Mying, Mying. *Laika Buk Mying*. Dip Shapraw Ai Shara/Muklum: Htangdip Gawng, Shaning.

Mangshang, Zung Bawm. *Mung Masa Karai Masa Hpaji*. Myitkyina: Hanson Htangdip Gawng, 2020.

, . . . : , .

4.5.2 Laika ka sara lahkawng/ masum hta jan ai laika buk (Two/Three Authors)

N: Bruce Malina and Jerome H. Neyrey, *Portraits of Paul: An Archaeology of Ancient Personality* (Louisville: John Knox, 1996), 134.

B: Bibliography ka ai shaloi, shawng na laika ka sara a rusai mying hpe shawng kaw ka let, ga hkring (comma,) hte ka nna hpang na laika ka sara ni hpe gaw, kaga alak mi n galai ra ai.

Malina, Bruce and Jerome H. Neyrey. *Portraits of Paul: An Archaeology of Ancient Personality*. Louisville: John Knox, 1996.

N: Dau Hkawng Htawshe hte Tangsau Sabaw, *Simsa Ngwi Pyaw Dik Ai Waimaw Chyum Jawng* (Myitkyina: Hanson Htangdip Gawng, 2020), 200.

B: Htawshe, Dauhkawng hte Tangsau Sabaw. *Simsa Ngwi Pyaw Dik Ai Waimaw Chyum Jawng*. Myitkyina: Hanson Htangdip Gawng, 2020.

4.5.3 Lik ka masum hta jan ai laika buk (more htan three authors)

N: Willem A. VanGemeren and others, *The Law, the Gospel, and the Modern Christian* (Grand Rapids: Zondervan, 1993), 78.

B: VanGemeren, Willem A., Greg L. Bahnsen, Walter C. Kaiser Jr., Wayne G. Strickland, and Douglas Moo. *The Law, the Gospel, and the Modern Christian*. Grand Rapids: Zondervan, 1993.

4.5.4 Dictionaries and Encyclopedias

Unsigned Articles

N: *Nelson's New Illustrated Bible Dictionary* (1995), s.v. "angel."

B: *Nelson's New Illustrated Bible Dictionary*. Edited by Ronald F. Youngblood. Nashville: Nelson, 1995. S.v. "angel." (s.v. =under the title of)

Author, "Title of Entry," in *Title of Dictionary*, volume, ed. (editor(s)) (City of Publishing: Publishing, date of publishing), page number(s).

Lik ka ai wa, "Tam ai Laika (ngau) ga baw," in *Dictionary mying*, volume kade (nga yang), ed. jep shagrin ai wa (Dip shapraw ai muklum: Htangdip gawng, shaning), laika man hti hkum.

N: Wayne A. Grudem, "Prophecy, Prophets," in *New Dictionary of Biblical Theology*, ed. T. Desmond Alexander and David W. Baker (Downers Grove: IVP, 2000), 701.

B: Grudem, Wayne A. "Prophecy, Prophets." In *New Dictionary of Biblical Theology*, edited by T. Desmond Alexander and David W. Baker, 701–10. Downers Grove: IVP, 2000.

4.5.5 Lik ka malai jep shagrin ai wa snr Ga Gale Ai Wa (Editor/Translator instead of author)

N: Jep shagrin ai wa, ed., *Laika ngau ga baw* (Dip shapraw ai muklum: Htangdip gawng, shaning), laika ruhkum.

N: Ga Gale ai wa, trans., *Laika ngau ga baw* (Dip shapraw ai muklum: Htangdip gawng, shaning), laika ruhkum.

N: James C. VanderKam, ed., *The Jewish Apocalyptic Heritage in Early Christianity* (Minneapolis: Fortress Press, 1996), 35.

B: VanderKam, James C., ed. *The Jewish Apocalyptic Heritage in Early Christianity*. Minneapolis: Fortress Press, 1996.

4.5.6 Corporate Author (Wuhpung Wuhpawng Seng ai Laika)

Southern Baptist Convention, *Annual of the Southern Baptist Convention* (Nashville: Southern Baptist Convention, 1975), 25.

Southern Baptist Convention. *Annual of the Southern Baptist Convention*. Nashville: Southern Baptist Convention, 1975.

4.5.7 Component Part by one author (Lik ka sara law law ka mahkawng da ai laika buk)

N: Lik ka ai wa, “tinang la ai laika ngau ga baw,” in *Laika Buk Ga Baw Mying*, ed. Jep shagrin ai wa (Muklum: Htangdip gawng, 1998), laika man ruhkum.

N: Richard M. Davidson, “Headship, Submission, and Equality in Scripture,” in *Women in Ministry: Biblical and Historical Perspectives*, ed. Nancy Vyhmeister (Berrien Springs: Andrews University Press, 1998), laika man.

B: Davidson, Richard M. “Headship, Submission, and Equality in Scripture.” In *Women in Ministry: Biblical and Historical Perspectives*, edited by Nancy Vyhmeister. Berrien Springs: Andrews University Press, 1998.

4.5.8 Secondary Source

N: Roland Barthes, *Image/Music/Text* (New York: Hill and Wang, 1977, 147; quoted in Wayne C. Booth, *Critical Understanding: The*

Powers and Limits of Pluralism (Chicago: University of Chicago Press, 1979), 372–373.

B: Barthes, Roland. *Image/Music/Text*. New York: Hill and Wang, 1977, 147. Quoted in Wayne C. Booth, *Critical Understanding: The Powers and Limits of Pluralism*. Chicago: University of Chicago Press, 1979, 372–373.

4.5.9 Journals

N: Mying rusai mying, “Tinang shaw la ai ka-ngau ‘article’ ga baw,” *Journal buk ting a makawp ga baw (italic hte ka na)* volume (g.sh., 1,2,3), no. 1, 2, 3 (lama series no lawm yang) (Shata Shaning): laika man ruhkum.

N: Richard Jackson, “Running down the Up Escalator: Regional Inequality in Papua New Guinea,” *Australian Geographer* 14, (May 1979): 180.

B: Jackson, Richard. “Running down the UP Escalator: Regional Inequality in Papua New Guinea.” *Australian Geographer* 14, (May 1979): 180.

N: Zau Nan Lagai, “Shanhpyi Laika (‘The Lost Book’) And Kachin Theology,” *Ginra Mahta Karai Masa (Kachin Contextual Theological Journal)* 1, (July 2019): 37.

B: Lagai, Zau Nan. “Shanhpyi Laika (‘The Lost Book’) And Kachin Theology.” *Ginra Mahta Karai Masa (Kachin Contextual Theological Journal)* 1, (July 2019): 37–44.

4.5.10 Interviews

N: Mying rusai mying (interview galaw hkrum ai wa interviewee), “Interview ga baw snr ga san,” interview galaw ai wa (interviewer), interview galaw ai shara, shata nhtoi, hte shaning.

N: Awng Di Labang, “Yu Ngwi Atsam,” interview by Zung Bawm Mangshang, Waimaw Chyum Jawng, December 25, 2020.

SN: Labang, interview.

B: Labang, Awng Di. “Yu Ngwi Atsam.” Interview by Zung Bawm Mangshang. Waimaw Chyum Jawng, December 25, 2020.

4.5.11 Magazines

N: Lik ka ai wa, “Laika (ngau) ga baw,” *Magazines mying*, dip shapraw ai shata shani, shaning, laika man.

N: Bruce Weber, “The Myth Maker: The Creative Mind of Novelist E.L. Doctorw,” *New York Times Magazine*, October 1985, 42.

B: Weber, Bruce. “The Myth Maker: The Creative Mind of Novelist E.L. Doctorw.” *New York Times Magazine*, October 1985.

N: Zung Bawm Mangshang & B.Th Final (2019-2020), “Hpa Majaw Matsan Nta?” *Sinpraw Shagan Magazine*, November 2019, 62–67.

Mangshang, Zung Bawm & B.Th Final (2019-2020). “Hpa Majaw Matsan Nta?” *Sinpraw Shagan Magazine*, November 2019, 62–67.

4.5.12 Thesis and Dissertations

N: Lik ka ai wa, “*Sawk Sagawn Laika Ga Baw*” (degree lamang, Jawng mying, shaning), laika man ruhkum.

N: Zung Bawm Mangshang, “*A Study of Jürgen Moltmann’s Political Theology in the Kachin Context*” (M.Div Thesis, Payap University, 2017), 40.

B: Mangshang, Zung Bawm. “*A Study of Jürgen Moltmann’s Political Theology in the Kachin Context.*” M.Div Thesis, Payap University, 2017.

4.5.13 Class Presentation

N: Tang madun ai wa, “Tang madun ai ga baw,” (gara tsang gawk hta tang madun ai, Jawng Mying, Muklum, Shata nhtoi, shaning).

B: Hkaw Chang Lagyawm, “Land Theology,” (paper presented at B.Min Class, Waimaw Theological Seminary, Waimaw, February 2019).

B: Lagyawm, Hkaw Chang. “Land Theology.” Paper presented at B.Min Class, Waimaw Theological Seminary, Waimaw, February 2019.

4.5.14 CD-ROM

N: *The Oxford English Dictionary*, 2nd ed. CD-ROM, version 2.0 (New York: Oxford University Press, 1999).

B: *The Oxford English Dictionary*. 2nd ed. CD-ROM, Version 2.0. New York: Oxford University Press, 1999.

4.5.15 Web page (Internet Laika man)

N: Lik ka ai wa (lama ka shalawm da yang), “Laika (Ngau) Ga Baw,” Dai Laika hpe, mara da ai page mying, web address(hkkring dat) (shaw ka la ai shata nhtoi, shaning).

N: Zung Bawm Mangshang, “Jesus’ Exorcisms in Mark as Symbolic Action for Political Liberation: A case study on Mark 5:1-20,” NARCIS, [https://theouniv.ub.rug.nl/115/1/MasterthesisBawn%2CZung%20juli\\$202018.pdf](https://theouniv.ub.rug.nl/115/1/MasterthesisBawn%2CZung%20juli$202018.pdf) (accessed August 8, 2020).

B: Mangshang, Zung Bawm. “Jesus’ Exorcisms in Mark as Symbolic Action for Political Liberation: A case study on Mark 5:1-20.” NARCIS. [https://theouniv.ub.rug.nl/115/1/MasterthesisBawn%2CZung%20juli\\$202018.pdf](https://theouniv.ub.rug.nl/115/1/MasterthesisBawn%2CZung%20juli$202018.pdf) (accessed August 8, 2020).

N: Gary Fisher, “The Gospel of Mark,” Free Online Bible Study Lessons, <https://www.biblestudylessons.com/mark/index.php> (accessed May 5, 2010).

B: Fisher, Gary. “The Gospel of Mark.” Free Online Bible Study Lessons.” <https://www.biblestudylessons.com/mark/index.php> (accessed May 5, 2010).

4.5.16 Lectures

N: Lecture jaw ai wa, “Lecture ga baw,” (Lecture, sharin tsang gawk, Jawng mying, muklum, lecture jaw shata nhtoi, shaning).

N: Dau Lum Htawshe, “Hkristan Ningbaw Ningla,” (Lecture, L.Th 2nd year, Waimaw Chyum Jawng, Mukchyit, August 10, 2020).

B: Htawshe, Dau Lum. “Hkristan Ningbaw Ningla.” Lecture, L.Th 2nd year, Waimaw Chyum Jawng, Mukchyit, August 10, 2020.

N: John Troutman, “Ethics in the Bible,” (Lecture, M.Div, Myanmar Institute of Theology, Yangon, February 2, 2009).

Troutman, John. “Ethics in the Bible.” Lecture, M.Div Class, Myanmar Institute of Theology, Yangon, Yangon, February 2, 2009.

4.5.17 Laika ka ai wa a mying n lawm ai/dip shapraw ai htangdip gawng mying n lawm ai/dip shapraw ai shaning n lawm ai / dip shapraw ai Muklum mying n chye ai/n lawm ai shaloi (No author/No Publisher, No Publing date, No Publication City)

Laika ka ai wa a mying n lawm ai/n chye ai shaloi, Laika buk/ngau ga baw kaw na ka hpang mai ai

N: *Mung Masa Karai Masa Hpaji* (Myitkyina: Hanson Htangdip Gawng, 2020), 10.

B: *Mung Masa Karai Masa Hpaji*. Myitkyina: Hanson Htangdip Gawng, 2020.

Dip shapraw ai shaning n chye/n lawm ai shaloi, n.d (No Publication Date)

Laika Ka Ai Wa (Mying, rusai mying), *Laika Buk Mying* (Dip Shapraw Ai Shara/Muklum: Htangdip Gawng, n.d), Laika ruhkum.

N: Zung Bawm Mangshang, *Mung Masa Karai Masa Hpaji* (Myitkyina: Hanson Htangdip Gawng, n.d), 10.

B: Mangshang, Zung Bawm. *Mung Masa Karai Masa Hpaji*. Myitkyina: Hanson Htangdip Gawng, n.d.

Dip shapraw ai htang dip gawng mying n chye/n lawm ai shaloi, n.p (No Publisher)

N: Zung Bawm Mangshang, *Mung Masa Karai Masa Hpaji* (Myitkyina: N.p, 2020), 10.

B: Mangshang, Zung Bawm. *Mung Masa Karai Masa Hpaji*. Myitkyina: N.p, 2020.

Dip shapraw ai muklum a mying n chye/n lawm ai shaloi, n.p (No Publication City)

N: Zung Bawm Mangshang, *Mung Masa Karai Masa Hpaji* (N.p: Hanson Htangdip Gawng, 2020), 10.

B: Mangshang, Zung Bawm. *Mung Masa Karai Masa Hpaji*. N.p: Hanson Htangdip Gawng, 2020.

Daw Kaba 5: How to write a WTS Research Proposal in English?

Introduction

In the current academic platform, the reputation of either a university or seminary it earns is based on its research quality. In order to grade an academic institution, ranking organizations consider its research quality that relates to the questions of how its research is scientifically conducted and how much relevant its research is to society. There is no doubt in our belief that Waimaw Theological Seminary is also called to serve our churches, society and even the world by putting our efforts on conducting research properly and by doing church and societal relevant research especially that addresses the field/specialization of the school “*equipping competent ministers.*”

In this paper some fundamental research proposal elements are presented with nine sub-topics. The final part ends with tentative Timeline for Conducting Research.

Let me kick off with a question: What is academic research? To put it simply, we can say that academic research is about asking good questions and answering those questions effectively and coherently.¹³ The following questions are exemplary and common to all academic research disciplines:

¹³ Writing Thesis and Dissertation Proposals:
https://faculty.chass.ncsu.edu/garson/PA803/Dissertation_Proposal_Guide.pdf (Accessed: 1 March 2020).

1. *What* do you want to research? in what field (research topic and research field)? What questions do you want to answer?
2. *What* are you going to write in order to support your arguments or opinions (Thesis Statement)?
3. Who will help you achieve your research (supervisor)?
4. Why does this research need to be done (background or problem of the research)?
5. What do you aim to achieve (aim and purpose)?
6. What are some sources to get started or have conversation in your research (literature review)?
7. *How* will you do research or how will you answer the research question (Methodology)?
8. What will your research contribute to your church or society, and how (Societal and church relevance)?
9. When do you intend to research (Time Management)?
10. Where will your research take place?

5.1 Research Title, Research Question, Research Area

Research topic: The research topic that the student is willing to conduct must comply with one of the research areas of WTS academic department. The scope of research should be neither too narrow nor too broad. The research must be finishable or completable within an academic year.

Suggestion or tip: The students in their research are urged to address, discuss and answer the critical issues of the church and society that are being crucial, disputed.

There are many types of research design: argumentative, descriptive, comparative, expository, review, etc. On the basis of student's research field (e.g., political science, music, and theology), he or she can apply the most suitable research design that fits his or her research question.

Research question: here you describe the main question you want to answer. This question will guide throughout your research journey. In addition, it will help you stick with what is directly related to your main question.

Research Field/discipline: you can choose any research area that you are interested. Nevertheless, it is imperative that your research area be offered at WTS (e.g., CE, NT, OT, Leadership, Pastoral, Theology).

5.2 Thesis Statement

Thesis statement is the *controlling* idea of research.

Here you briefly explain *what* and *how* you will discuss and present.

Tips: -Thesis statement is usually written in one sentence that appears at the last line of introduction.

Tip: Be as specific as possible.

5.3 Supervisor

Supervisor: Based on your research specialization, WTS academic department selects the most suitable supervisor for you.

5.4 Research Problem/Background of Research

Here you describe why your research topic needs to be studied, such as, due to the presence of flaws, or incompleteness or misinterpretation in the former research.

In support of why your research needs to be done, you can include some arguments with strong reasons or evidences. Is your research relevant to your context?

In addition to including some reasons for conducting research, you can add some significances of his or her research. How does your research differ from the existing research?

5.5 Purpose/Aims of the Research, Scope and Limitation of the Research

Here you describe aims and purposes of his or her research.

You should explain: to what extent you will search and what cannot be covered in your research

5.6 Literature Resources and Review

In this section you present the main sources at least 2 or 3 books and explain why and how those books are reliable and relevant to your research.

Suggestion: You should start your research from something that already exists. You review or comment the main sources you use while conducting research. When you review the main sources, make sure you take out and discuss only what is directly applicable to your research question. It is vital to correctly interpret the main sources and properly contextualize the relevant ideas from the main sources for your research.

You can present some significant flaws and incompleteness of existing research. You can discuss some added value of your research.

5.7 Methodology

To achieve the goals of your research, you need *methods, materials* and *procedures*. You can have general or overall method for the whole research and specific methods for each chapter or each question. At this part you describe *how in general* you discuss, solve the research problem, argue and justify your arguments. In other words, you show *how in specific* you will collect and organize data needed, analyse and discuss the results. Moreover, if necessary, you can incorporate both the strengths and weaknesses or limitations of the methods you will use. Additionally, you can indicate the strengths and weaknesses of the methods of existing research in short.

Is your research in general either qualitative or quantitative (mathematical or statistical) or a mixture of both? Or will you integrate case studies approach into your research? If yes, you can explain why case study is relevant?

How will you collect the data you need? For instances, by surveying, interviewing (how many interviewees will be chosen? Why and how? Where will your interview take place, archival and library research?)
-you can use more than one approach to conduct your research.

5.8 Societal and Church Relevance/Application

What kinds of benefits/profits will your research contribute to individual life, your church or society?

- Dai hku sawk sagawn ai majaw, tinang a wuhpung wuhpawng, nawku hpung, snr dinghkrai hkam la lu na akyu ni

5.9 Daw Kaba Ni A Ntse Lam Ningmu/Malawm/Daw Kaba Langai hte Langai Mahkri Shawn Ai Lam Ni (Overview of Chapters/The Structure of the whole research)

Title page (Sawk Sagawn Ga Baw Ka Shalawm Ai Laika Pa)

Approval sheet (sawk sagawn laika hte seng nna shagrin laika jeman)

Acknowledgements (chyeju dum ga)

Table of contents (malawm jeman)

Table or list of illustrations (optional) (sawk sagawn laika hta sumla lawm ai rai yang, sumla hkrang jasat jeman)

List of abbreviations (sawk sagawn laika pa hta kadun dawk laika hkum ni hpe lachyum shaleng dan ai, kadun dawk jahpan jeman)

Introduction: Your corrected and polished thesis proposal can finally become *the introduction* for the whole research.

Chapter 1: Literature Review

Chapter 2: Literature Review (different topic with different approach)

Chapter 3: Findings and Discussions

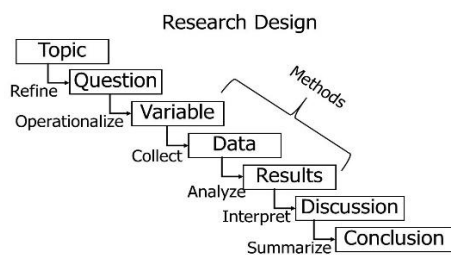
Here you can incorporate recommendations for future research.

Conclusion: present the summary of each chapter by paraphrasing

You can end with some reflection or application.

Appendixes or Glossary (Sawk sagawn laika buk a jahtum daw hta “Bai Jat Shaleng ra ai nga yang” ka na matu re).

Bibliography (Mahta snr shamyet shanat laika jahpan ka hkrang)



From unknown source:

5.10 Sawk Sagawn Hkrun Lam Aten Chyarang (Timeline for Conducting Research)

Topic+proposal+collecting main data: March-June

Introduction: July

Chapter 1: August

Chapter 2: September- October

Chapter 3+Conclusion: November-December

January 2nd week: First Draft Submission

February: Correct, edit, revise, contextualize+ final submission

Following the proposal discussion, the general style guide issued by WTS will be discussed.

Daw Kaba 6: Ntsa Lam Sawk Sagawn Laika Buk Hkrang Matsun¹⁴

General Format Guidelines for Research and Paper Writing

6.1 Laika Pa Lata La Ai Lam (Paper Size)

Research laika pa hpan gaw A4 80gms rai ra na.

6.2 Body Text (Laika Pa Hkrang: npu hte lahta hta kadun ai hku)

Portrait (position of the page: shorter sides at top and bottom)

6.3 Margins at top, bottom, and right 1" and Left 1.5"

Laika ka wa ai shaloi, laika pa a 'lahta,' 'npu,' hte 'hkra' maga de yungnu bat langai 1" tawn ra ai. Laika pa a 'Pai' maga de gaw yungnu bat mi chyen 1.5" taw ra ai. Hpa majaw ta nga yang, laika buk chywi shalawm na shara tawn da ra ai majaw re.

6.4 Spacing

Double Spacing

6.5 Font

Times News Roman 12 points

"Times New Roman" Font ngu ai laika ga si hkrang sha lang nna, dai laika hkum gaw size 12 points hte sha lang ra ai.

6.6 Laika Man Ruhkum Ka Bang Ai Ladat (Inserting Page Number)

Laika man ruhkum or numbat hpe laika pa a "Npu" "Ka-ang" kaw ka ra ai. Laika numbat gaw, sawk sagawn laika kata na laika hkum hte size maren sha rai ra ai (Times New Roman 12 points).

6.7 Ningshawng Laika Pa Numbat (Preliminary pages/Bottom/Center/Roman Number)

Sawk sagawn laika buk a ningshawng laika pa ni rai nga ai: Malawm, Chyeju dum ga ni hpe gaw laika pa a "htumpa" "ka-ang" hta Roma ruhkum: i, ii, iv, v, vi....hte ka ra ai.

6.8 Ga Baw Kaba Ni hpe Shara Jahkrat ai Lam (Title and Headings).

Chapter or major headings, introduction, bibliography appendixes is 2" from top.

Sawk sagawn laika pa hta, 'daw kaba ga baw,' 'ga hpaw,' 'shamyet shanat ga baw' zawn re ai ga yan ni hpe gaw, laika pa matu nchyan 'margin' a ndung kaw nna, lawu htum pa de 2" jahkrat nna ka ra ai.

6.9 (4.75 hta jan ai Ga Baw Kaba Ga Yan Ni (title longer than 4.75)

¹⁴ Ndai daw kaba gaw Rev. Lahpyaw Hawng Hkawng (2012-2013) hku nna The Collection of MIT Library Resources hta mahta nna sawk tang madun da ai laika pa hta npawt hkridun tawn ai re.

Title longer than 4.75 " must be divided longer part on the first line, double space between, if three lines, single spaced.

Sawk sagawn laika a "ga baw kaba" ga yan ni gaw 4.75" hta jan nna galu ai rai yang, "double space" jahkrat nna, ga yan lahkawng garan kau ra ai. Dai hta jan nna "ga baw kaba" ga yan ni naw galu ai rai yang, "single spaced" galaw nna line 3 garan kau ra ai.

6. 10. Daw Kaba Shagu A Ga Baw Kaba

Chapter titles are in Caps and Bold.

Daw kaba shagu a "ga baw kaba" ni hpe gaw "**LAIKA HKUM KABA**" (ya ka madun tawn ai zawn) hte ka nhtawm "bold" -ga si shachyang tawn ra ai.

6. 11. Ga Si hte Ga Yan Ni Hpe Raw Shaw La Ai Lam (Quotations)

Quotations are single spaced. Indented 2 *inches* from each margin and one point smaller than the body text.

Tinang a sawk sagawn laika hta, kaga sawk tam laika buk kaw na, ga yan 3 hta jan ai hpe dai laika ka sara ka tawn ai hku nna sha, maren raw rai nna "lakap shaw la ai lam" galaw ai rai yang, "single spaced" hte galaw ra na. Maren raw raw lakap shaw la ai ga yan ni hta, lai nna kaga sawk sagawn laika ni yawng hpe gaw, "double spaced" hte ka ra na. Dai lakap shaw la ai ga yan ni hpe, pai hkra "matu nchyan" kaw nna yungnu bat lahkawng (2 inches) shagang ya ra ai.

Daw Kaba 7: Jinghpaw Laika (Version) Masat Ai Lam, Laika Pa Hti Hkum Masat Ai Lam Hte Lik Nhprang Masat Ai Lam

Kachin Language Version, Page Limitation and A Standard Number of References or Sources

7.1 Jinghpaw Laika (Version) Masat Ai Lam,

Chyurum Wunpawng Sha ni hpe Dr. Ola Hanson ga gale da ya ai Jinghpaw Chyum Laika hte, shi galaw da ya ai Kachin-English Dictionary¹⁵ ni hpe sawk sagawn laika, laika ngau kadun ka ai ten hta, jai lang na. Matut nna, Sara kaba Manam h pang a prat dep English-Kachin-Myanmar Pocket Dictionary¹⁶ hpe mung jahkum shatsup jai lang na.

7.2 Laika Pa Hti Hkum Masat Ai Lam (Page Limitation)

C.Th jawng ma ni gaw, yawm htum term paper hku laika man 20-25 ka ra na (Mahta laika jahpan mung lawm yang, footnote and bibliography).

L.Th jawng ma ni gaw, laika man 30-35 lapran ka ra na (Mahta laika ka ai mung lawm yang, footnotes and bibliography)

B. Th students are expected to write a research paper which is 35-40 pages in length rather than in terms of words in length including reference pages (footnotes and bibliography).

B. Min ni gaw term paper or major paper hkrang hku nna, laika man yawm htum 20-25 ka ra na. References hpe mung ka shalawm ra na.

7.3 Lik Nhprang Masat Ai Lam (A Standard Number of References or Sources)

B.Th jawng ma ni gaw, tinang a sawk sagawn ai laika a matu, yawm htum lik nhprang 20 jai lang nna, madung lit nhprang laika (10) jai lang ra ai. L.Th jawng ma ni gaw tinang a sawk sagawn ai laika a matu yawm htum, lik nhprang 15 jai lang nna, madung lik nhprang laika (7) jai lang ra ai. Dai ni hta laika buk ni, journals, magazines, dictionaries, interviews, online nhprang ni mai lawm ai. Madung lik nhprang (primary sources) gaw yawm htum 8 nga ra ai.

C.Th hte B.Min ni gaw, tinang ka na term paper a matu yawm htum lik nhprang 10 jai lang ra ai. Yawm htum lik nhprang madung 5 lang ra na (primary sources).

B.Th, L.Th, C. Th ni gaw laika pa, lawu e ka ai lik nhprang jahpan (footnote) hte, hkrak tang madun ra ai. B.Min ni gaw, footnote n lawm ra ai, reference hte sha tang madun mai ai.

¹⁵ Ola Hanson, *A Dictionary of the Kachin Language: Kachin-English* (American Baptist Mission Press: Yangon, 1906)

¹⁶ H pang Manam, *English-Kachin-Myanmar Pocket Dictionary* (Myint Press: Yangon, 2012)

Daw Kaba 8: Sawk Sagawn Laika Ka HkrunLam Hpe Hpaji Jaw Ai Lam

Research Supervision (for Supervisors)

Hpaji jaw supervisor shagu gaw, tinang a sharin ginphan, snr hpaji shingdu labau (specialization) hta hkan nna WTS hpaji dap kaw na, shang ya ai jawng ma hte, yawm htum jawng lung ladaw langai semester 1 hta 2 lang lahta hkrun na myit mada ai. Sawk sagawn laika ngut kre let, jawng kaw ap ai shani du hkra jawng ma hpe hpaji jaw, lam woi, shading sharai ya ai lam hta yawm htum 5 lang hkrun na matu n-gun jaw ai.

Sharin sara hku nna, ningnan sha jawng kaw shang ai rai yang, snr hpaji jaw (supervision) mahkrum madup n nga shi ai rai jang, jawng hta tinang a shawng e, galaw nga nna hpaji jaw (how to supervise) mahkrum madup nga ai sharin sara/saranum ni hpe, hpaji hpyi na matu n-gun jaw ai. Hpaji up hpe ading tawk karum mai hpyi ai.

Jawng ma hpe, hpaji jaw ai ten hta ndai sawk sagawn laika ka matsun hta, rawng ai hte maren hpaji jaw na matu, n-gun jaw ai. Hpaji jaw, shading sharai ya ai hta lai nna, tinang hte ka ang ai jawng ma hpe, ka ya ai lam n mai galaw na. Shinggan de Research ka shangun ai lam hpe, supervisor na chye ai rai yang, jawng jahkring ai kaw, du hkra ahkyak la mai ai.

Tinang hte ka ang ai jawng ma hte seng, nna ra ahkyak, g.shd., ga baw galai mayu ai rai yang, snr hpaji shangwang galai mayu ai rai yang WTS hpaji dap de shana let, hpaji hpyi ra na. Lama na sawk sagawn laika hpe hpaji jaw nga ten hta, tinang hkyak hkyak machyi makaw hkrun, snr hkyak hkyak jawng matut mat ra ai, snr jawng hte seng ai magam bungli a majaw, hpaji jaw ai lam n lu galaw ai masa du ai shaloi snr hkawm sa ra ai rai yang, WTS hpaji dap de shana let, WTS hpaji dap ni bai hparan hpareng mat na re.

Daw Kaba 9: Sawk Sagawn Laika Ka Hkrunlam hpe Bai Myit Mang Dinglun Yu Ai Lam (Research Supervision Evaluation)

Ndai hkrang gaw, hpaji jaw ai wa (supervisor) hku nna, du wa na shaning hkan bai hpaji jaw wa ai ten hta, grau hkrak tang du ai hku nna, hpaji lu na matu yaw shada ai re. Tinang hte ang ai jawng ma hpe, sawk sagawn laika ap ai shani snr hpaji jaw ai lam ngut ai shani jaw let jawng ma wa a gaw gap ai hpaji jaw dinglun (constructive comments) ai hpe hkam la na matu re. Jawng ma wa a mying n ka shalawm ra ai.

Hpaji Jaw (supervisor): _____/Hpaji Ladaw (Academic Year) _____/Tsang gawk (Class): _____

1. Sawk sagawn laika ka ai kaw na sharin hkam la lu ai akri (ni) snr machye machyang langai hpe ka ya rit? What are/is the most important theme(s) or knowledge you learned from writing this research paper?
2. Sr/n a jawng ma ni hpe shakut mayu, ka mayu hkra n-gun jaw lu ai lam, jawng ma hte sara lapran shada mahkri shawn ai, hku hkau kanawn mazum lam ni gaw: Teacher's capacity to motivate students to work hard, interactive relationship with students: a) n hkrak ai (poor); b) ram daw re (fair); c) hkrak ai (good); d) grai hkrak ai (very good).
3. Sawk sagawn laika ka wa ai hkrunlam hta grai myit ru, grai ba ai zawn hkam sha ai lam madang? The level of pressure in the process of research writing.
a) 0%, b) 10%, c) 20%, d) 50%
4. Hpaji jaw ai ten hta, lang ai ladat ni (g.shd., sang lang dan ai lam ni). How would you grade the supervision techniques used in writing process? a) n hkrak ai (poor), b) ram daw re(fair); c) hkrak ai(good) d) grai hkrak ai(excellent)
5. Ngai ka ai sawk sagawn laika gaw, ngai galaw sa mat wa ai magam bungli snr nye prat a matu akyu. a) nga ai (Yes), b) n nga ai (No).
6. The level of understanding of Teacher's suggestions and comments? Hpaji jaw ai hpe, chye na ai madang hte akyu nga ai madang? a) 100%, b) 80%, c) 50%, d) 20%
7. Hpaji jaw ai wa a aten jaw ai lam hpe, myit dik ai kun? Time availability of the supervisor. a) myit dik ai (satisfied) b) myit n dik ai (dissatisfied)
8. Grau hkrak ai hku, lu ka hkra gara hku jawm galaw sa mat wa na, gawgap hpaji jaw ga ni? Constructive suggestions to improve supervision?

Daw Kaba 10: Sawk Sagawn Laika Ka Lik Nhprang Ni (A List of recommended sources for Thesis and Paper writings)

Sawk Sagawn Laika Pa Hpe Dam Lada Ai Hku Hkaja Chye mayu yang lawu na lik hkringdat ni hta mai hkaja yu ai.

Matsing: Ndai matsun laika buk na ningmu nkau mi mung, lawu na lik nhprang ni hta mahta da nga ai.

10.1 Internet Laika Man Ni (Web pages)

<https://www.chicagomanualofstyle.org/turabian/toc.html>

Ndai website link hta gara hku, tinang lang ai lik (hpan shagu) hpe shagrau ai lam hta gara hku galaw ra ai lam hpe atsawm mu lu na re.

Writing Thesis and Dissertation Proposals:

https://faculty.chass.ncsu.edu/garson/PA803/Dissertation_Proposal_Guide.pdf

Ndai website link hta gaw, sawk sagawn tang shawn hkrang, gara hku ka ra ai hte sawk sagawn tang shawn hkrang hta, lawm ging ai kri madung malawm ni hpe, sang lang ai hku shachyen ya ai.

10.2 Laika Buk Ni (Books)

Booth, Wayne C., Gregory G. Colomb, and Joseph M. Williams. *The Craft of Research*. 3rd ed. Chicago: University of Chicago Press, 2008.

Ndai laika buk hta gaw, sawk sagawn laika a shingni maka hte gara hku, jaw hkrak akyu rawng ai sawk sagawn laika hpe ka ra ai lam dam lada ai hku shaleng da ai.

Maru, Brang Seng, ed. *Style Guide Summary For Research Papers, Major Papers and Thesis*. 2016

Ndai laika buk gaw KTCS Nawng Nang Dakkasu kaw na Rev. Marung Brang Seng hku nna KTCS a sawk sagawn ai laika ni hta, jai lang ai ka hkrang, structure+format hte ladat ni hpe ka shaleng da ai re.

Smith, Kevin Gary. *Academic Writing and Theological Research. A Guide for Students*. South African Theological Seminary Press: Johannesburg, 2008.

Matut nna, Myen ga hku grau hti manu ni gaw, Myen Mung MIT chyum jawng kaw na Dr. Eh Thar Gay ka shapraw ai sawk sagawn laika a manu hte, gara hku ka ra ai(ladat ni) hpe Myen hku nna, sanglang jahpra, tang madun da ai laika buk hpe mung matut hkaja mai ai

The following sample is a recommended research title page design issued by WTS for B. Th degree.

WAIMAW THEOLOGICAL SEMINARY

**A STUDY OF “LOVING ENEMY IN MATTHEW 5:44” IN THE
KACHIN CONTEXT**

(Research title written with bold and capital letter and centralized and font size 14)

**A
RESEARCH
SUBMITTED TO THE
WAIMAW THEOLOGICAL SEMINARY
IN
PARTIAL FULFILLMENT OF THE REQUIREMENT
FOR THE DEGREE
OF
BACHELOR OF THEOLOGY**

BY

LABUNG ZUNG BAWM (Researcher)

22 FEBRUARY 2020 (approval date)

**A STUDY OF “LOVING ENEMY IN MATTHEW 5:44” IN THE
KACHIN CONTEXT**

**THIS RESEARCH HAS BEEN SEEN AND APPROVED
BY**

.....
Sr. Mangshang Zung Bawm
(Supervisor)

.....
Srn. Gunhtang Nang Htang
Hkawng
(Academic Dean)

.....
Rev. Htawshe Dau
(Principal)

Lawu na title page hkrang gaw L.Th degree a matu re

WAIMAW THEOLOGICAL SEMINARY

CHYUM LAIKA HTA NA SAK NAWNG AI SAI NKAU NI

BY

LAGYI LUM HKAWNG

MUKCHYIT

February 23, 2017

APPROVAL SHEET

CHYUM LAIKA HTA NA SAK NAWNG AI SAI NKAU NI

Ngu Ai

Sawk Sagawn Tang Shawn Laika

Hpe

LICENCIATE THEOLOGY or Bechalar of Ministry

Shagrau Sha-A Lakmat A Matu Myit Hkrum Hkap La Sai Lam Ta Masat Ka
Da Ga Ai.

Rev. Lagang Ze Hkawng
(Jawng Up)

Rev. Htawshe Dau Hkawng
(Hpaji Up)

Srn. Lahtaw Jaw Seng Raw
(Supervisor)

Date of Approval

Lawu na hkrang gaw C.Th/B.Min lamang a matu re

WAIMAW THEOLOGICAL SEMINARY

AKYU HPYI AI HTE AWNG DANG AI LAM

BY

CHIKHPAN BAWM SAU

MUKCHYIK

February 23, 2017

APPROVAL SHEET
AKYU HPYI AI HTE AWNG DANG AI LAM

Ngu Ai
Sawk Sagawn Tang Shawn Laika
Hpe

CERTIFICATE THEOLOGY

Shagrau Sha-A Lakmat A Matu Myit Hkrum Hkap La Sai Lam Ta Masat Ka
Da Ga Ai.

Rev. Lagang Ze Hkawng
(Jawng Up)

Rev. Htawshe Dau Hkawng
(Hpaji Up)

Srn. Lala Ze Naw
(Supervisor)

Date of Approval

The following Designs for Exegetical, Practical and Systematic Papers are developed by Kelvin Gary Smith (2008).

Biblical Exegesis

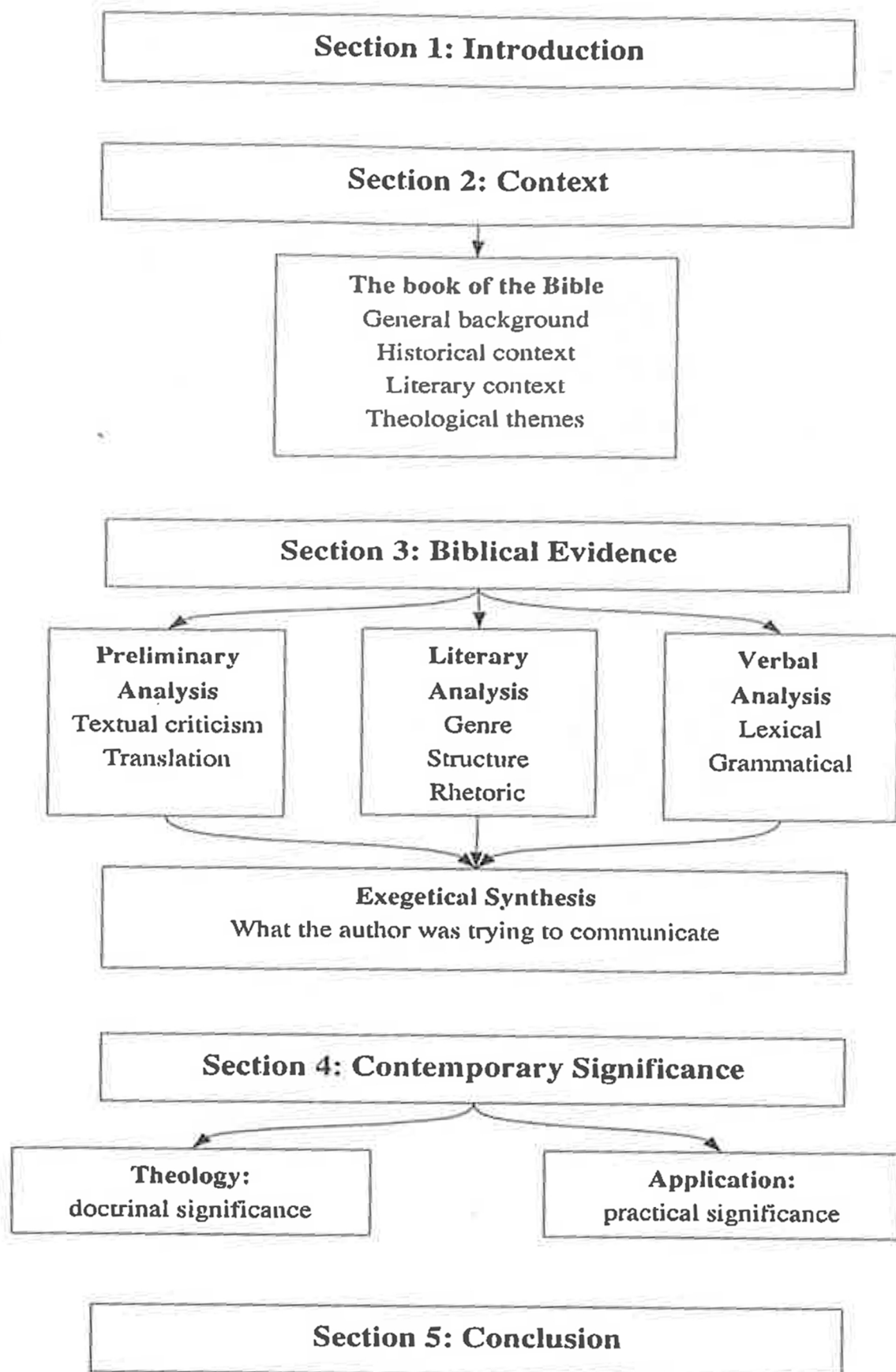


Figure 13: Design for an Exegetical Study

Systematic Theology

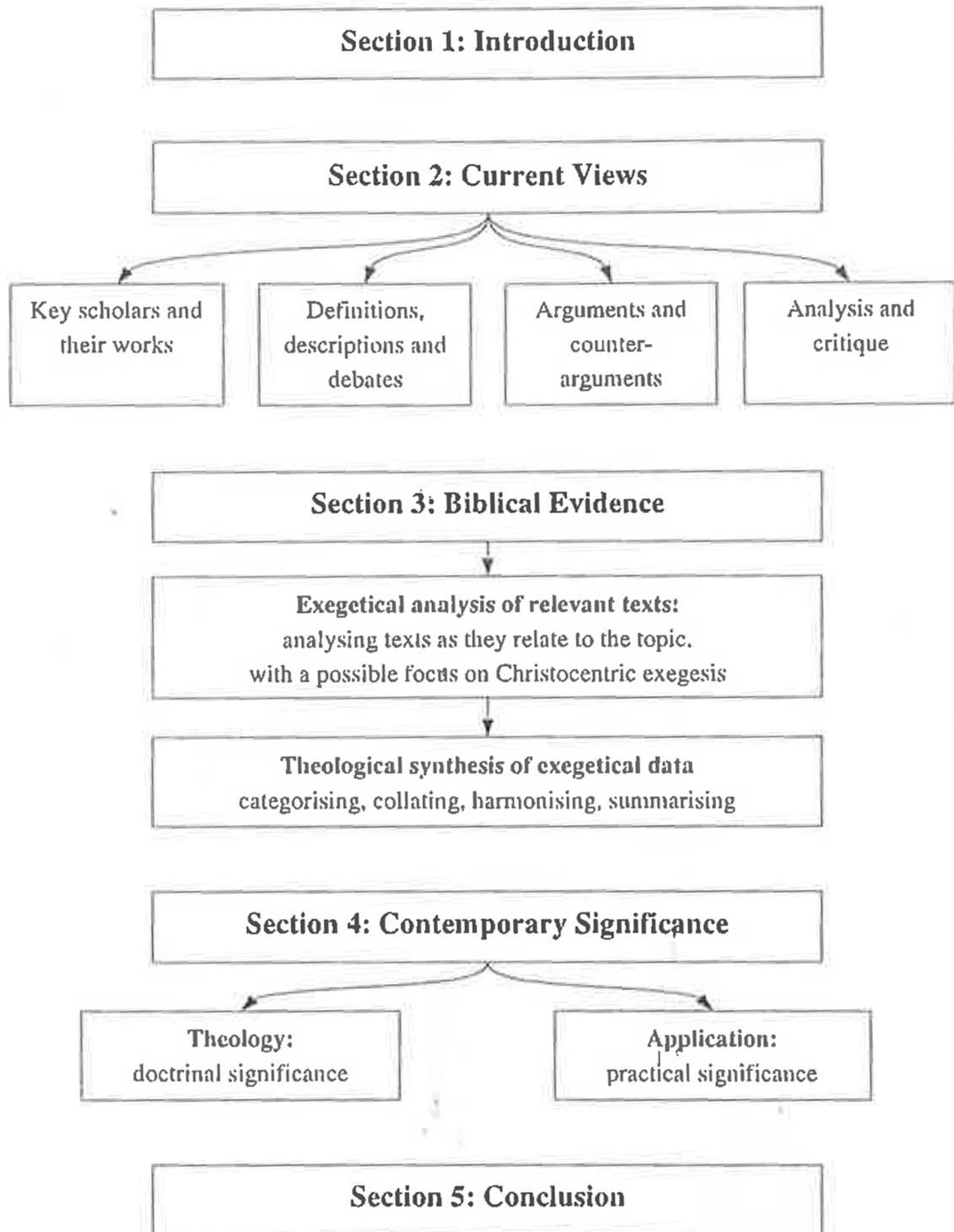


Figure 14: Design for a Systematic Study

Alternate design for evangelical theology

You cannot always conduct a full exegetical study of what the entire Bible teaches about a chosen topic in a single research project because this often requires in-depth exegesis

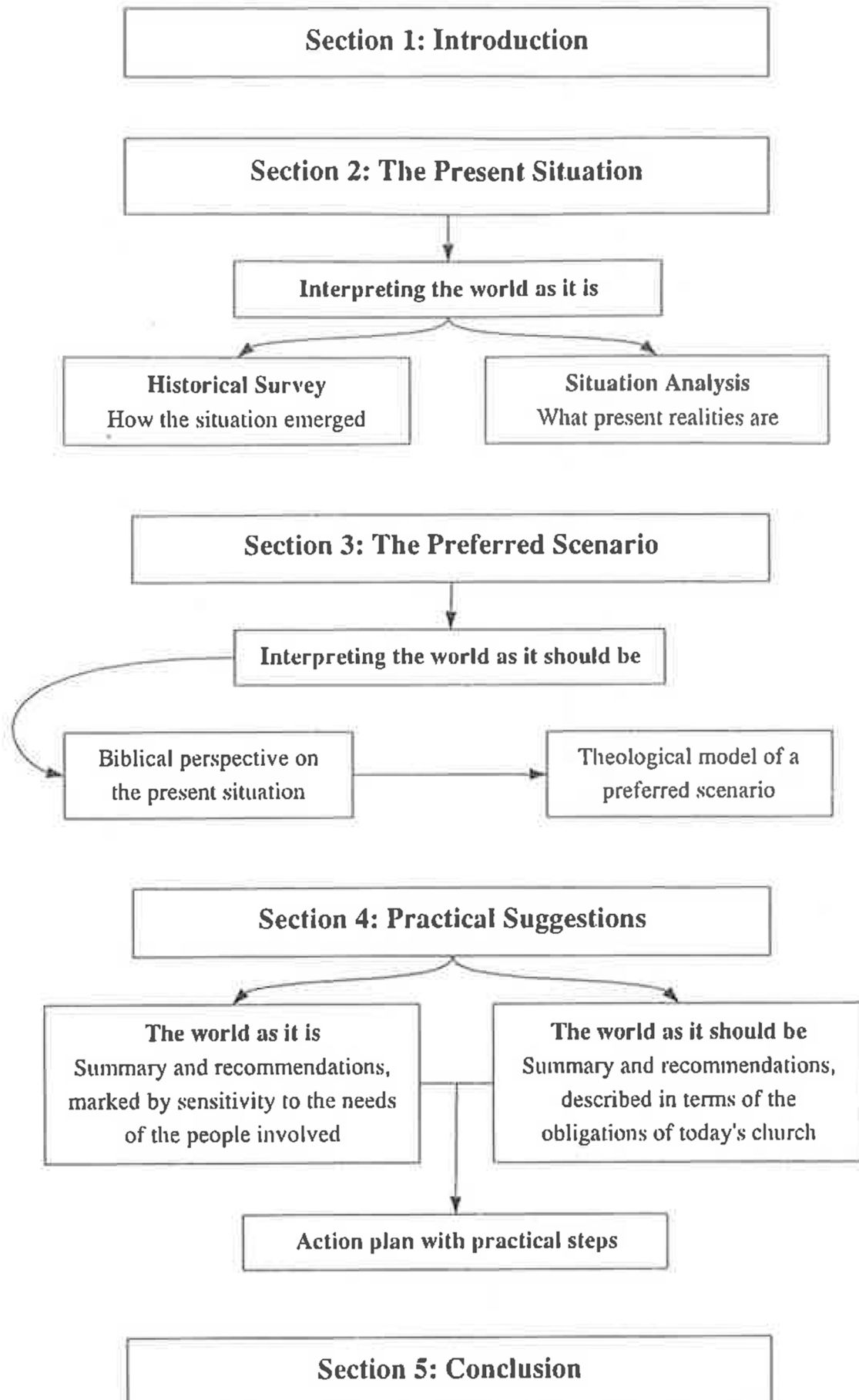


Figure 17: Design for a Practical Study